

# Schulich Financial Support





“The \$1,600 entrance scholarship to McGill University’s MBA program was probably the **most valuable** \$1,600 I’ve ever had... It changed my life.”

SEYMOUR SCHULICH, CM (HON LLD '03)  
President  
Sheriff Capital Corporation Ltd.

## Seymour Schulich, Distinguished Benefactor

The MBA scholarship he won left Distinguished Benefactor Seymour Schulich with a conviction that if he could ever do the same to help young people in a similar way, he would. He has remained true to his word.

The first beneficiaries of Mr. Schulich’s commitment were Canadian business schools. Within years of graduating with his MBA in 1965, Mr. Schulich had established scholarships supporting business students interested in entrepreneurial studies. At Schulich, the \$3,500 “Schulich Scholarship for Entrepreneurship” was created in 1984.

In December of 1995, Seymour Schulich made what was the largest donation to any university in Canada’s history – a \$15 million endowment that made possible a series of undergraduate, graduate and postgraduate entrance scholarships which are renewable throughout each winner’s program of studies. As well, the gift made possible the creation of a series of named academic chairs in a range of management fields. In recognition of this major contribution to York and of its potential impact on management excellence in Canada, the University’s Faculty of Administrative Studies was renamed the Schulich School of Business.

Mr. Schulich’s generous support of the School has continued. His gifts have literally transformed the Schulich School of Business. Schulich scholarships have helped to attract outstanding students to its degree programs. Similarly, the new academic chairs have attracted some of the world’s leading scholars to Schulich. Donations to capital campaigns have helped make possible the building of the award-winning Schulich School of Business and Executive Learning Centre complex. They have also been used to strengthen all aspects of the Schulich School’s profile as one of the world’s leading schools of management.

### TABLE OF CONTENTS

#### 2 MASTER’S-LEVEL AWARDS AND FINANCIAL SUPPORT

- 2 Schulich Entrance Awards
- 6 Continuing Student Awards
- 9 Specialization Awards
- 12 Bursaries
- 14 Graduating Student Awards
- 16 External Awards

#### 17 UNDERGRADUATE-LEVEL AWARDS AND FINANCIAL SUPPORT

- 17 Schulich Entrance Awards
- 18 Continuing Student Awards/Bursaries
- 21 Graduating Awards

#### 22 PHD-LEVEL AWARDS AND FINANCIAL SUPPORT

- 22 Schulich School of Business Awards
- 23 York University and External Awards

#### 24 STUDENT LOAN PROGRAMS

- 25 Projected Program Costs

#### 26 SCHULICH DONOR SUPPORT

- 26 Supporting Student Education
- 27 Schulich Donor Spotlight

#### 28 AWARD INDEX

Back Cover  
INFORMATION AND INQUIRIES

**“ Gifts to the Schulich School of Business in the form of scholarships, awards and bursaries have a major impact on the achievements of our students. These achievements in turn contribute in a significant way to the School’s continued success.”**

**DEZSŐ J. HORVÁTH, PhD, CM**

Dean & Tanna H. Schulich Chair in Strategic Management  
Schulich School of Business



#### **A MESSAGE FROM THE DEAN**

## The Schulich Advantage. Global. Innovative. Diverse.

Our standing in the world’s top tier of management schools is one of the many advantages Schulich offers you. Another is our extensive financial aid program made possible through the generous support of the School’s many stakeholder groups. Support in the form of financial aid makes it possible for us to fulfil our mission to graduate men and women who will become business leaders of the highest calibre, and to prepare them to succeed in a constantly changing world.

As you read this summary of our awards and financial support, you will find a full range of scholarships and awards available to incoming and continuing students with high academic standing. As well, an extensive bursary program makes it possible for students in financial need to pursue a Schulich degree.

Scholarships, bursaries and awards add value to the overall Schulich experience in a number of ways. They allow us to attract the world’s best and brightest students. The exceptional quality of these students guarantees a high level of classroom interaction. As well, their diversity in terms of educational, cultural and work backgrounds enriches every class and adds multiple perspectives on business and decision-making.

Scholarships, bursaries and awards make it possible for our undergraduate, graduate and postgraduate students to spend more time on their studies instead of having to work. With this extra time, they are also able to get more involved in extracurricular activities. Such activities help build essential networks of contacts, develop leadership skills and complement in-class learning.

Scholarship, bursary and award recipients report that having their academic excellence recognized builds confidence and self-esteem. Such recognition also strengthens their résumés.

A Schulich degree provides graduates with a high return on their original investment of time, energy and capital. As a result, many of our alumni choose to reinvest in future generations of Schulich students through their gifts of financial aid. Gifts to the Schulich scholarship, award and bursary program are critical to School’s future success. I am extremely grateful to the many donors who have supported our programs. They have made a major difference in the life of this School, as well as in the lives of the student scholarship, award and bursary winners.

Schulich's award program rewards the achievements of incoming students. The School has created numerous awards that are among the **highest value offered** to business students in Canada.



"It was an honour to be selected to receive a Robert Krembil Entrance Award. The award not only acknowledged my previous academic accomplishments, but also encouraged me to continue striving for excellence while at Schulich. With the burden of financial strain lifted from my shoulders I've been able to focus on my studies, take advantage of the high quality of teaching offered at Schulich and maximize my learning."

**NATHALIE ASSOUD (MBA '09)**  
Robert Krembil MBA Award \$20,500

## SCHULICH MASTER'S-LEVEL

# Entrance awards

### Robert Krembil Scholarship of Merit

The Robert Krembil Scholarship of Merit was created by Mr. Krembil, CM (MBA '71, Hon LLD '00) to recognize an incoming MBA student who has demonstrated the highest academic standing, a minimum of four years working experience, excellent communication skills, leadership ability and contribution within the community. The award is renewable in the second year of the MBA program with achievement of a GPA of 7.0 (A-) on the first 30 credit hours of course work. The award is allocated in the fall of each year. Selected entering students are invited to apply.

**VALUE: \$37,768 renewable (\$75,536 over two years)**

### Robert Krembil MBA Award

The Robert Krembil MBA Award is presented each fall to an entering MBA student. The recipient of this award presents first class standing in previous academic work (A average), at least two years working experience, demonstrated leadership in either extracurricular activity or community involvement and demonstrates financial need. The award is renewable in the second year of the MBA program with achievement of a GPA of 7.0 (A-) on the first 30 credit hours of course work. Selected entering students are invited to apply.

**VALUE: \$27,768 renewable (\$55,536 over two years)**

### Robert Krembil MBA Entrance Award

In recognition of academic excellence and merit, Robert Krembil, CM (MBA '71, Hon LLD '00) has created the Robert Krembil Entrance Awards. The awards are presented to incoming MBA students who have demonstrated academic excellence, at least two years of working experience and financial need. Recipients have been active in their community and have demonstrated leadership either in the workplace or through extracurricular activities. Selected entering students are invited to apply.

**VALUE: The value of each Award is equivalent to annual tuition in first year (two semesters) (5 awards available)**

#### Entrance Award Applications

No separate application is required for entrance awards unless otherwise noted. Full-time admitted applicants are considered for entrance scholarships based upon admissions information. Fall applicants should apply for program admission before February 1st to be considered for first offers of entrance awards. Winter applicants should apply for program admission before July 15th to be considered for first offers of entrance awards.

### Seymour Schulich MBA Entrance Scholarship

In recognition of academic excellence and merit, Seymour Schulich, CM (Hon LLD '03) has created the Seymour Schulich MBA Entrance Scholarships. The scholarships are presented to incoming MBA students who have demonstrated academic excellence and at least two years working experience. Recipients have been active in their communities and have demonstrated leadership qualities either in the workplace or through extracurricular activities.

**VALUE: \$22,000 (5 scholarships available)**

### Tanna H. Schulich MBA Entrance Scholarship

In recognition of academic excellence and merit, Seymour Schulich, CM (Hon LLD '03) has created the Tanna H. Schulich MBA Entrance Scholarships. The scholarships are presented to incoming MBA students who have demonstrated academic excellence and at least two years working experience. Recipients have been active in their communities and have demonstrated leadership qualities either in the workplace or through extracurricular activities.

**VALUE: \$22,000 (5 scholarships available)**

### Scotiabank Scholarship in International Business

The Scotiabank Scholarships in International Business are offered each fall to a student who has been admitted into year two of the MBA program at the Schulich School of Business after having completed a year of study at the Guanghua School of Management. The recipient of the award will have demonstrated academic excellence as determined by top academic performance in comparison to his/her peers. Scotiabank will also offer a three-month internship to the successful recipient.

**VALUE: 20,000**

### Peter F. Bronfman Scholarship of Merit

The Peter F. Bronfman Endowment has been created to honour the memory of the prominent business leader, Peter F. Bronfman, OC, a founder of the Brascan Group. From this fund, the Schulich School of Business awards the Peter F. Bronfman Scholarship of Merit each year to an incoming full-time MBA student. The recipient of this award must have demonstrated academic excellence in previous studies (A average), have two years full-time working experience, shown leadership in extracurricular or community involvement and demonstrate financial need. The award is renewable in the second year of the MBA program with achievement of a GPA of 7.0 (A-) on the first 30 credit hours of course work. OSOTF guidelines apply.

**VALUE: \$10,000 renewable (\$20,000 over two years)**

### Harry Steele Entrance Award

The Harry Steele Entrance Award is presented each fall to an entering MBA student. The recipient will have presented excellent academic standing (A average) from previous studies, and have shown involvement either in extracurricular activities or community service. The recipient will also demonstrate financial need. OSOTF guidelines apply.

**VALUE: \$10,000**

### Lawrence Bloomberg Entrance Award

The Lawrence Bloomberg Entrance Award is offered each fall to an entering MBA student. The recipient of this award will have presented first class standing in previous academic work (A average), demonstrated leadership in either extracurricular activity or community involvement and demonstrates financial need. OSOTF guidelines apply.

**VALUE: \$10,000**

### Marshall A. Cohen Entrance Award

The Schulich School of Business honours the contribution Marshall A. Cohen, OC has made to the school with the creation of the Marshall A. Cohen Entrance Awards. These entrance awards are presented each fall to three (MBA, MBA/JD and Nonprofit) incoming full-time students. To be eligible for the awards, the students must have demonstrated academic excellence in previous studies (A average), at least two years of full-time working experience, shown evidence of community involvement or extracurricular activities which have contributed to the well-being of others and demonstrates financial need. OSOTF guidelines apply.

**VALUE: \$10,000 (3 awards available)**

### Hennick Scholars Program

This program provides awards to the best students entering the Joint JD/MBA program. Students will be selected on the basis of academic excellence and financial need. The awards will be directed primarily at students entering the first year of the joint program, but may also be given to a student entering his or her second year (having completed an initial year of either business or law study). Recipients must have an outstanding academic record, be a Canadian citizen, permanent resident or protected person, a resident of Ontario and demonstrate financial need.

**VALUE: \$7,500 (2 scholarships available)**

### Dean's International Scholarship

In recognition of academic excellence and merit, the Schulich School of Business has created the Dean's International Scholarship. Each year, selected incoming full-time international Schulich MBA/IMBA students will receive the Dean's International Scholarship based on demonstrated academic excellence. The Scholarship is renewable in the second year of the program if the recipient receives a minimum GPA of 7.0 (A-) on the first 30 credit hours in the program.

**VALUE: \$6,000 renewable (10 awards available)**

#### OSOTF (Ontario Student Opportunity Trust Fund)/OTSS (Ontario Trust for Student Support) Guidelines

Many awards and bursaries contained in this guide indicate that students must satisfy OSOTF or OTSS residency requirements to apply. Students who have been Ontario residents for a minimum 12-month period prior to the start of their study period are eligible to apply for these awards. In addition, students must be either Canadian Citizens, Landed Immigrants or Protected Persons and must be able to demonstrate financial need.



"The support that the award offers has helped me finance my MBA, while giving me the chance to continue participating in community initiatives that are important to me. I feel very fortunate to have received this award, and I look forward to applying my new skills to my work in the nonprofit sector."

**CHRISTINA SACKEYFIO (MBA '11)**  
The Marshall A. Cohen Entrance Award Recipient \$10,000

### Brokers Trust Insurance Group Award in Memory of Gena Giansante

The Brokers Trust Insurance Group Award in Memory of Gena Giansante is given annually to an incoming female MBA/IMBA student majoring in accounting or finance. The recipient will have a minimum B+ average and will be a Canadian citizen, permanent resident or protected person and resident of Ontario who demonstrates financial need.

**VALUE: \$5,000**

### Peter F. Bronfman Entrance Award

The Peter F. Bronfman Entrance Awards are presented each year to entering full-time students in the Schulich MBA program. Recipients of the awards must demonstrate academic excellence in previous studies (A average), minimum two years of full-time working experience, leadership in extracurricular or community involvement and demonstrate financial need. OSOTF guidelines apply.

**VALUE: \$5,000 (3 awards available)**

### Carol Anne Letheren Entrance Award

In memory of Carol Anne Letheren (MBA '77), for her tireless support and contributions to Schulich Alumni worldwide. This entrance award is presented each fall to an incoming full-time MBA student who has demonstrated academic excellence in previous studies (A average), has at least two years of full-time working experience, has shown evidence of community involvement or extracurricular activities that contributed to the well-being of others, and demonstrates financial need. OSOTF guidelines apply. Renewal is contingent upon a minimum GPA of 7.0 (A-) on the first 30 credit hours in the program.

**VALUE: \$5,000 renewable (\$10,000 over two years)**

### Ian Lithgow Memorial Award

The Ian Lithgow Memorial Award was created in memory of a great friend of York University and the Schulich School of Business. This renewable entrance award has been established for a full-time MBA student who has demonstrated previous academic excellence and financial need. OSOTF guidelines apply. Renewal is contingent upon a minimum GPA of 7.0 (A-) on the first 30 credit hours in the program.

**VALUE: \$5,000 renewable (\$10,000 over two years)**

### Allen T. Lambert Scholarship

The Brookfield Foundation has established a renewable entrance scholarship in honour of Allen T. Lambert (LLD '82). This scholarship is awarded annually to an entering full-time MBA student who has demonstrated academic excellence in previous studies. The award is renewable in the second year of the program if the recipient achieves academic standing in the top quartile of the MBA year one.

**VALUE: \$5,000 renewable (\$10,000 over two years)**

### The Bernie Kom Memorial Award

This entrance award honours the memory of a long-time respected friend, Bernie Kom. Mr. Kom worked in the securities industry for 40 years. His expertise in this area helped many individuals attain financial independence. This award has been established to recognize these accomplishments. Each year, a full-time entering MBA student is selected to receive this award. The recipient will have demonstrated previous academic excellence and financial need. OSOTF guidelines apply.

**VALUE: \$5,000**

### International Student Fellowship

Each year, the Schulich School of Business provides a number of International Student Fellowships to incoming MBA or IMBA international students. To qualify, incoming students must demonstrate academic excellence, leadership or entrepreneurship, as well as financial need.

**VALUE: \$5,000 (7 awards available)**

### The Joyce and Fred Zemans Scholarship at York University

The Joyce and Fred Zemans Scholarship at York University will be awarded to current graduate students at York University that have a minimum grade point average of 6.00 (B+). This scholarship has three awards. One award will be given to a graduate student enrolled in the Faculty of Fine Arts Graduate Program in Art History, with preference given to students with an interest in Canadian Art and/or Curatorial Studies. One award will be given to a student enrolled in the Schulich School of Business' MBA program, specializing in Arts and Media Administration. One award will be given to a graduate student who is a Canadian citizen and is enrolled in the Osgoode Hall Law School's Graduate Programs in Law, with preference given to students whose research focuses on Alternative Dispute Resolution or Access to Justice.

**VALUE: Variable, approximately \$3,300**

### The Louis J. Brody Q.C. Entrance Scholarship

The Louis J. Brody Q.C. Entrance Scholarship fund was established in 1996 in memory of Louis Brody (1904–1984) by his brother William Brody, C.A. It is awarded annually to an incoming student in the MBA/JD program on the basis of excellent academic qualifications. The endowed fund supports up to four entrance scholarships which are awarded on the basis of academic excellence and financial need to Ontario students in the MBA/JD program entering their first year of study at Osgoode. OSOTF guidelines apply. Awarded through Osgoode Hall Law School.

**VALUE: \$2,500**

### Kenneth Laundry Entrance Scholarship

For many years, Ken Laundry has taught in both Osgoode Hall Law School and the Schulich School of Business. To honour his longstanding affiliation, a fund was established to create the Kenneth Laundry Entrance Scholarship. The scholarship is awarded annually to an entering MBA/JD student who has achieved outstanding academic performance in preparation for the joint program. OSOTF guidelines apply.

**VALUE: \$2,500**

### Irwin Allen Nadal Entrance Award

The Irwin Allen Nadal Entrance Award is presented to an incoming MBA or IMBA student in recognition of academic excellence and merit. Selection is based on demonstrated academic achievement and financial need. Recipients must have a minimum cumulative GPA of 6.0 (B+). OSOTF guidelines apply.

**VALUE: \$2,500**

### Miles Spencer Nadal Entrance Award

The Miles Spencer Nadal Entrance Award is presented to an incoming MBA or IMBA student in recognition of academic excellence and merit. Selection is based on demonstrated academic achievement and financial need. Recipients must have a minimum cumulative GPA of 6.0 (B+). OSOTF guidelines apply.

**VALUE: \$2,500**

### Renee Anne Nadal Entrance Award

The Renee Anne Nadal Entrance Award is presented to an incoming MBA or IMBA student in recognition of academic excellence and merit. Selection is based on demonstrated academic achievement and financial need. Recipients must have a minimum cumulative GPA of 6.0 (B+). OSOTF guidelines apply.

**VALUE: \$2,500**

### McKinnon Family MBA Entrance Award

The McKinnon Family MBA Entrance Award is presented to an incoming MBA or IMBA student. The recipient will have demonstrated academic excellence and merit in previous studies and demonstrates financial need. OTSS guidelines apply.

**VALUE: \$2,500**

### Union Gas MBA Award

In recognition of academic excellence and merit, Union Gas Limited has created the Union Gas MBA Award. Incoming MBA students who demonstrate academic excellence, at least two years of working experience and financial need are eligible. Preference is given to students who plan to pursue a Business and sustainability specialization. Recipients will have been active in their community and have demonstrated leadership either in the workplace or extracurricular activities.

**VALUE: \$2,500**

### Thomas J. Bata IMBA Entrance Award

Each fall a limited number of incoming IMBA (International MBA) students are provided entrance awards. These awards are presented on the basis of academic excellence and demonstrated financial need. OSOTF guidelines apply.

**VALUE: \$2,000 (10 awards available)**

### Olanrewaju Olowoyeye Entrance Award

The Olanrewaju Olowoyeye Entrance Award is presented to an incoming MBA student in recognition of academic excellence and merit. Selection is based on demonstrated academic achievement and financial need, with a preference given to a student who is a resident of Africa.

**VALUE: 2,000**

### The Max Wolfe Memorial Scholarship

In his lifetime, Mr. Wolfe's entrepreneurial drive, his sense of business ethics and his profound attention to people, were the key factors responsible for his success in building the Oshawa Group. To be eligible for this scholarship, the recipient must be at least 26 years old, have two years full-time working experience, be a graduate from an accredited Canadian University and have achieved first class academic standing. The recipient must also show evidence of involvement and leadership in community life. Selected entering students are invited to apply. Applicants will be asked to submit a two-page essay detailing their entrepreneurial initiatives and to explain how an MBA will contribute to their endeavours.

**VALUE: \$1,500**

### Frederick G. Gardiner Scholarship

This scholarship is awarded for academic excellence to a full-time student entering the MBA program with an undergraduate degree in engineering. The Lake Ontario Steel Company established this scholarship in honour of Frederick G. Gardiner.

**VALUE: \$1,000**

### Lake Ontario Steel Entrance Scholarship

This endowed scholarship is provided to an entering full-time MBA student with an undergraduate degree in engineering.

**VALUE: \$1,000**

### The Peter T. Zarry MBA Award

The Peter T. Zarry MBA Award is made available to an incoming MBA student with a minimum 6.0 (B+) average, two years of working experience with a focus on marketing and demonstrated financial need. Preference is given to a student who plans to pursue a marketing specialization. Recipients will have been active in their communities and have demonstrated leadership skills. This award has been established by friends to honour the memory of Peter T. Zarry.

**VALUE: Variable**

#### Research and Teaching Assistantships

A limited number of research assistantships and teaching assistantships for full-time students are available at Schulich. To apply for research assistantships, students must submit a covering letter and résumés to the Executive Director of Student Services and International Relations. To apply for teaching assistantships in the undergraduate programs, students should consult with the Office of the Executive Officer. To apply for teaching assistantships in the graduate programs, students should consult with the MBA program office.

Schulich offers a range of scholarships and awards that recognize the **achievements** of continuing Master's-Level students and support their educational costs.



MR. REICHMANN with The Foundation for Better Communities Award recipient ELISHA MUSKAT (MBA '09)

## SCHULICH MASTER'S-LEVEL

# Continuing student awards

### Thomas Beck MBA Award

The Thomas Beck MBA Award is presented to a first-year full-time MBA student. The recipient must have a minimum GPA of 6.0 (B+) and demonstrate financial need. OSOTF guidelines apply.

**VALUE: \$5,000**

### Carol Anne Letheren Women's MBA Award

The Carole Anne Letheren Women's MBA Award will be presented each year to a second-year full-time female student. The recipient must have a minimum average of 6.0 (B+) and demonstrate financial need. OSOTF guidelines apply.

**VALUE: \$3,000**

### The Foundation for Better Communities Award for Outstanding Leadership in Business Ethics

This award has been made possible through a generous gift from the Foundation for Better Communities and will be presented to a second-year full-time MBA or IMBA student who has demonstrated outstanding achievement and leadership in the area of business ethics and good governance. Recipients will have demonstrated academic achievement and financial need. OSOTF guidelines apply.

**VALUE: \$3,000**

### The Sony of Canada MBA Scholarship

The Sony of Canada MBA Scholarship is awarded to a second year full-time MBA student with strong academic achievement (minimum 7.00 GPA) and specializing in either Marketing or Arts & Media Administration. This scholarship was established by the Sony Canada Charitable Foundation.

**VALUE: \$3,000**

### Wigwamen Scholarship

This endowment fund has been established by Wigwamen Inc., a nonprofit housing organization supporting members of the Aboriginal community in Canada. This scholarship is offered to an entering MBA student of documented Aboriginal descent who has demonstrated financial need.

**VALUE: \$2,500**

#### OSOTF (Ontario Student Opportunity Trust Fund)/OTSS (Ontario Trust for Student Support) Guidelines

Many awards and bursaries contained in this guide indicate that students must satisfy OSOTF or OTSS residency requirements to apply. Students who have been Ontario residents for a minimum 12-month period prior to the start of their study period are eligible to apply for these awards. In addition, students must be either Canadian Citizens, Landed Immigrants or Protected Persons and must be able to demonstrate financial need.

### Isaac Akande Scholarship

---

The Isaac Akande Scholarship will be awarded annually to a BBA, iBBA, MBA or IMBA student who is enrolled in first year and has been involved in extracurricular activities within the Black or wider community. The recipient will have demonstrated academic excellence and financial need.

**VALUE: \$2,000**

### Alan and Esther Hockin Award in International Study

---

A fund was created by faculty, staff members and friends of the Schulich School of Business to honour Alan Hockin, Dean of the Faculty from 1984 to 1988, and his wife Esther Hockin. This award is available to full-time students in the MBA or IMBA program with a concentration in International Business studies. The award is presented prior to the recipient's enrollment in course work at an exchange partner institution. The candidate must have demonstrated academic excellence and must enroll at an exchange partner institution. OSOTF guidelines apply.

**VALUE: \$2,000**

### Matthew Badeau Award

---

Mr. Bradley J. Badeau (MBA '82) has designated a gift to the Schulich School of Business in honour of his son Matthew. This award is provided to full-time continuing MBA students with demonstrated academic excellence. OSOTF guidelines apply.

**VALUE: \$2,000**

### Michael Paul Sardella Award for International Studies

---

Established in memory of Michael Paul Sardella who spent his last few years working in Southeast Asia, this award recognizes his passion for travel and the study of different cultures. It will be awarded to an undergraduate or graduate Schulich School of Business student to travel abroad for internships with foreign organizations as part of their international program of studies. The recipient must have a minimum GPA of 6.00 (B+) and demonstrate financial need. Recipients must be Canadian citizens, permanent residents or protected persons who are residents of Ontario and demonstrate financial need.

**VALUE: \$2,000**

### The Class of 1969 Centennial Fellows Award

---

This award will be given annually to a full-time MBA or IMBA student, in their second year of study, who has demonstrated dedication to academic excellence and a commitment to leadership as evidenced through their extracurricular involvement at Schulich. The recipient will have a minimum GPA of 7.00 and will be a Canadian citizen, permanent resident or protected person and resident of Ontario who demonstrates financial need.

This award was created by the Centennial Fellows, a group of class of 1969 MBA graduates of the Faculty of Administrative Studies, York University.

**VALUE: \$2,000**

### Tillo E. Kuhn International Student Award

---

This award has been established through the generosity of the family of Tillo E. Kuhn in honour of his lifelong interest in international studies and developing countries. This award will be given to a full-time MBA or IMBA international student studying on a visa who has achieved high academic standing in the first year of the program (B+ average or better). This student must show an interest in international business or international economics and must also have actively participated in life at the Schulich School in year one. Preference is to be given to students from Africa or Latin America.

**VALUE: \$1,500 or available interest**

### Robert Cuff Fellowship

---

The Robert Cuff Fellowship provides travel grants to Master's-Level or Doctoral students researching topics related to the United States. Eligible students must be enrolled full-time in the York History Department or the Schulich School of Business. Applications will be received from both Master's-Level and Doctoral students, but preference will be given to Doctoral students. Award recipients are selected based upon academic ability, financial need, and a proposal explaining how research travel in the United States will contribute to their scholarly objectives.

**VALUE: Variable; maximum value of \$1,500**

### Michael R. Bigger MBA Award

---

Through a generous gift from Michael R. Bigger (MBA '92), an award has been established to fund a second-year full-time MBA student. Successful applicants must have achieved academic standing of at least 5.0 (B) on the first 30 credit hours of the program and must be registered in the full-time program in second year. OSOTF guidelines apply.

**VALUE: \$1,400**

### Class of 2008 Graduate Business Council Award

---

Established by the Executive of the 2007–2008 Schulich Graduate Business Council (GBC), the Class of 2008 Graduate Business Council Award will be given each year to a Schulich graduate student in recognition of academic excellence, as well as positive contribution to the Schulich community. Eligible students must have completed a minimum of 30 credit hours. Selection is based on demonstrated academic achievement, financial need and volunteer involvement at the School within the prior school year. Members of the GBC Executive are not eligible for this award. OTSS guidelines apply.

**VALUE: \$1,250**

### Robert L. Rossman MBA Award

---

The Robert L. Rossman MBA Award is awarded each year to a second-year full-time MBA student, with a focus in Finance and/or Marketing. The recipient must have a minimum cumulative average of 6.0 (B+) and demonstrate financial need. OSOTF guidelines apply.

**VALUE: \$1,250**

### Joe Cicero Scholarship

---

This award was established by the family of Schulich alumnus Joe Cicero (MBA '87), in his memory. Extremely active in the community in general, and with the Knights of Columbus, Joe Cicero rose to the ranks of senior management at Kodak Canada in his early thirties. He was an inspiration to friends, relatives and colleagues. The scholarship is awarded to a second-year part-time MBA student with a minimum GPA of 6.0 (B+), demonstrated community contribution and/or worthwhile extracurricular involvement, and demonstrated financial need. OSOTF guidelines apply.

**VALUE: \$1,000**

### Union Carbide Scholarship

---

The Union Carbide Scholarship is provided annually for students entering second year of the MBA, IMBA or MPA program. The scholarship is based on academic excellence and the student must demonstrate financial need.

**VALUE: \$1,000**

### Winchcombe Scholarship Fund

---

In memory of Owen and Millicent Winchcombe, an annual scholarship is awarded for scholastic achievement to the top students entering second year of the full-time MBA program and third and fourth-year of the BBA or iBBA program.

**VALUE: \$1,000**

### The James Gillies Award

---

James Gillies, founding Dean of the Schulich School of Business, has long been known for his leadership in the university, industry and the public sector. Eligible students must be in second-year of the MBA, IMBA or MPA programs, have achieved a GPA of at least a 6.0 (B+) and have demonstrated significant contribution either in community life or university service.

**VALUE: \$1,000**

### The Kamlini Kumar Memorial Award

---

This award celebrates the life of Kamlini Kumar (MBA '03), a remarkable young woman who rose to the top of her profession at a very young age and became CEO of Ophthalmic Consultant Centres. Given annually to a full-time MBA student who, like Kamlini, has demonstrated dedication to academic excellence, a commitment to leadership and community service. The recipient will have a minimum GPA of 7.0 and will be a Canadian citizen, permanent resident or protected person and resident of Ontario who demonstrates financial need.

**VALUE: \$1,000**

### Dennis Starritt MBA Award

---

The Dennis Starritt MBA Award is presented each year to a second-year full-time MBA student who has achieved academic standing of at least 6.0 (B+) following the first year of the program and has demonstrated financial need. OSOTF guidelines apply.

**VALUE: \$1,000**

### Schulich School of Business Alumni Award

---

This award was created through generous contributions made by Schulich Alumni. All Schulich degree programs are eligible for these awards. Students must demonstrate financial need and have achieved good academic standing. OSOTF guidelines apply.

**VALUE: \$1,000, \$750 and \$500 based on demand and financial need**

### The Susan Barnes and Daniel Pauze Award for Business and Sustainability

---

This award is created in memory of Susan Barnes and Daniel Pauze who were passionate about the environment and sustainable development. This award will recognize academic excellence and merit. Second-year graduate students from the Schulich School of Business who demonstrate academic excellence, at least two years of working experience and financial need are eligible. Recipients will have been active in their communities and have demonstrated leadership in the areas of sustainable development and/or the environment, in the workplace, and/or extracurricular activities. Preference will be given to a student specializing in business and sustainability.

**VALUE: \$1,000**

### Stanley and Frances Weigen Award

---

This award is given annually to an MBA student that is participating in the Schulich School of Business Global Leadership Program, specifically the Schulich-Recanati Partnership. The recipient will have a minimum 7.00 (B+) average grade and will be a Canadian citizen, permanent resident or protected person who is a resident of Ontario and demonstrates financial need.

**VALUE: \$1,000**

### Gregory Misztela MBA Award

---

The Gregory Misztela MBA Award is awarded to a second-year full-time MBA student who has demonstrated a minimum 6.0 (B+) standing and financial need. The award is made possible through the generosity of Mr. Gregory Misztela (MBA '88). OSOTF guidelines apply.

**VALUE: \$540**

### The James Foy Award

---

Mr. James Foy (MBA '67) was a member of the first graduating class and held the position of Executive Director of the Schulich Career Centre, where he was instrumental in assisting Schulich graduates find careers upon graduation. The recipient must have received advanced standing in the MBA program from the Schulich BBA program. OSOTF guidelines apply.

**VALUE: \$500**

### Graduating Class of '94 Full-time Scholarship

---

The MBA graduating class of 1994 created this scholarship. The scholarship is offered each year to a full-time MBA or IMBA student who has completed year one of the program with a minimum GPA of 6.0 (B+). The recipient must have contributed to the School, either through academic excellence or extracurricular activity. Applicants must demonstrate financial need.

**VALUE: \$100**

### Graduating Class of '94 Part-time Scholarship

---

The MBA graduating class of 1994 created this scholarship. The scholarship is offered each year to a part-time student in the final semester of the MBA program who has achieved a minimum GPA of 6.0 (B+) and demonstrates financial need.

**VALUE: \$100**

### Master's-Level Case Competition Conference Award

---

This award will provide financial assistance to Master's-Level students at the Schulich School of Business who have been invited to attend case competitions and/or to act as more than a participant in a conference. The award will assist with a portion of the travel/competition/conference fees.

**VALUE: Variable**

## SCHULICH MASTER'S-LEVEL

## Specialization awards

**Accounting or Finance****Steven K. Hudson Finance Scholarship**

---

The Steven K. Hudson Finance Scholarship has been established by Steven (BBA '81) and Sharon Hudson. This annual award is given to a full-time MBA student entering second year who has demonstrated the highest academic result in managerial finance 5200.03.

The recipient must be focusing studies in second year in the finance area.

**VALUE: \$5,000**

**W. David Wood Award**

---

Awarded annually to a second-year MBA student who has selected studies in accounting or finance. The student must have achieved a minimum GPA of 6.0 (B+) average following first year in the program and demonstrate financial need. OSOTF guidelines apply.

**VALUE: \$1,500**

**Zoran Fotak Award**

---

A Director of Merrill Lynch Canada, Schulich alumnus Zoran Fotak (MBA '87) has established an endowed award. The Zoran Fotak Award is presented to an MBA student who has demonstrated financial need and is specializing in either accounting or finance. OSOTF guidelines apply.

**VALUE: \$300**

**Arts and Media Administration****Stuart McAllister Award**

---

The Stuart McAllister Award is awarded to a full-time first year MBA student who has selected the arts and media administration specialization. The recipient must present at least a 5.0 (B) average on courses completed in first year, have made significant contribution to the community in Arts or Culture and demonstrate financial need. This award may include a summer internship between first and second year with an entertainment company in Canada.

**VALUE: \$5,000**

**The Bickell Internship Award in Arts and Media Administration**

---

All students enrolled in the MBA program in arts and media administration, including those who are enrolled jointly in the arts and media area and a Fine Arts graduate program, are eligible for this award in the year in which they undertake their internship commitment. This award is based on the merit of the student's contribution to academic and cultural life. OSOTF guidelines apply.

**VALUE: Variable; minimum \$3,000, maximum \$7,500**

**The Onex Award in Arts and Media Administration**

---

The Onex Corporation's President and Founder, Gerald Schwartz, has had a lifetime commitment to the arts. Eligible students are enrolled in the MBA program in arts and media administration, including those jointly enrolled in a Fine Arts graduate program in the year they undertake their internship commitment. Awards are based on academic merit and contribution to academic and cultural life. OSOTF guidelines apply.

**VALUE: \$500**

**George Gardiner Award in Arts and Media**

---

Students enrolled in the MBA program in arts and media administration including those enrolled jointly in a Fine Arts graduate program are eligible for this award in the year in which they undertake their internship commitment. The award is based on merit and includes grades and contributions made to academic and cultural life.

**VALUE: \$500**

**Imasco Awards in Arts and Media Administration**

---

All students enrolled in the MBA program in the arts and media administration specialization will be eligible for consideration for these awards. Awards will be made based upon merit. This will include grades and contribution to academic and cultural life. OSOTF guidelines apply.

**VALUE: Variable**

## Entrepreneurial Studies

### Schulich Scholarship for Entrepreneurship

---

The Schulich Scholarship for Entrepreneurship is given to a student entering second year of the MBA program with a specialization in entrepreneurial studies. The award is based on entrepreneurial experience and potential, as well as general scholastic ability. OSOTF guidelines apply.

**VALUE: \$3,500**

### Mark S. Orlan Award

---

This award has been established through a gift from Schulich Alumnus Mark S. Orlan (MBA '91). The award is provided annually to a second-year MBA student in financial need. The recipient's area of specialization must be entrepreneurial studies. OSOTF guidelines apply.

**VALUE: \$500**

### The Andrew J. Sherwin Bursary

---

This annual bursary has been established by Schulich alumnus Andrew J. Sherwin (MBA '89). It is awarded to a student with demonstrated financial need who is enrolled in the MBA program specializing in entrepreneurial studies. OSOTF guidelines apply.

**VALUE: \$500**

## Financial Engineering

### Chandra Wijaya Award in Financial Engineering

---

Eligible recipients will be second year full-time MBA students with an area of specialization in Financial Engineering. Preference will be given to students who are pursuing the Graduate Diploma in Financial Engineering. The student will demonstrate academic excellence and will be a Canadian citizen, permanent resident or protected person and resident of Ontario who demonstrates financial need.

**VALUE: \$1,000**

## Financial Services

### Steven K. Hudson MBA Bursary in Financial Services

---

This bursary is awarded each year to a second-year full-time MBA student who has declared a specialization in financial services and has demonstrated a minimum academic standing of 6.0 (B+) following first year. OSOTF guidelines apply.

**VALUE: \$5,000**

### The John Hunkin Financial Services Award

---

This award was established through a generous gift from John Hunkin (MBA '69). The award is available to students registered full-time in second-year of the Schulich MBA program specializing in financial services. Students must demonstrate financial need and preference will be given to those with a minimum 6.0 (B+) average. OSOTF guidelines apply.

**VALUE: \$5,000**

### Great-West Life, London Life and Canada Life Award

---

The award is given annually to a second-year full-time MBA student specializing in financial services. Preference is given to a student with previous experience in the insurance industry and a minimum 6.0 (B+) average grade.

**VALUE: \$2,250 or available interest**

## MBA/JD Joint Program

### MBA/JD Joint Student Association Award

---

The MBA/JD Joint Student Association Award was created by the MBA/JD Class of 1997, as their graduating class gift to the program. The award is given to a student entering fourth-year of the program. Application is made through Osgoode Hall Law School.

**VALUE: \$3,000**

### Robert J. Gemmell MBA/JD Award of Excellence

---

Schulich alumnus Robert J. Gemmell (MBA/JD '83) has established this endowed award. The award is presented annually to a third-year female MBA/JD student for academic achievement and commitment. OSOTF guidelines apply.

**VALUE: \$1,000**

### Terence G. Kawaja MBA/JD Award

---

This award is presented to a fourth-year MBA/JD student. The recipient must have demonstrated achievement of a minimum 5.0 (B) average in each faculty, participation in a senior leadership role in the MBA/JD Student Association, contribution to the quality of student life, and demonstrates financial need. OSOTF guidelines apply.

**VALUE: \$500**

## International MBA

### Citibank President's Award

---

This award is presented by Citibank Canada in recognition of the firm's commitment to global commerce and in support of the Schulich School's expertise in international management education. The award is presented to the IMBA student with the highest average in his/her core courses at the end of the third term. OSOTF guidelines apply.

**VALUE: \$2,000**

### The Pratt & Whitney Canada Inc. International MBA Award

---

Pratt & Whitney Canada Inc., a world leader in gas and turbine engines for the aviation industry, firmly supports the education sector as a means to enhance the community. This award is designed to assist students wishing to pursue their education with an International MBA degree. OSOTF guidelines apply.

**VALUE: \$1,500**

## Marketing

### Case Competition Marketing Award

The Case Competition Marketing Award is presented to a second-year full-time MBA student with a specialization in marketing. The student must demonstrate academic excellence and financial need.

**VALUE: \$1,000**

## Nonprofit Management and Leadership

### Nonprofit Internship Bursary

Students enrolled in the MBA program in the nonprofit program can apply for this bursary in the year in which they undertake their internship commitment. The awards are based on academic merit and contributions to academic life at Schulich. Applicants must demonstrate financial need. OSOTF guidelines apply.

**VALUE: \$3,000**

### Victor Murray Bursary

This bursary recognizes the work of Professor Victor Murray in developing the nonprofit management and leadership program at Schulich. The recipient must be enrolled full-time in the MBA program specializing in nonprofit management and leadership and demonstrates financial need.

**VALUE: \$1,500**

## Real Property Development

### Morguard Award

Full-time or part-time MBA students enrolled in first year may apply for the Morguard Award. The recipient will have identified Real Property Development as the focus or major area of study. Demonstrated leadership and contribution to the community and/or the real property industry will be identified through a short detailed résumé and cover letter. Candidates will be selected based upon academic achievement and community involvement.

**VALUE: \$2,000**

### Elisa Di Bartolomeo-Di Lorenzo GTHBA Prize in Government Relations

The prize will be awarded annually to an MBA student in either the specialization or the Diploma program in Real Property for excellence in PROP 6200: Development Prototypes. Selection will be made based upon an assignment dealing with the topic of government relations as they affect the real property industry, as well as the final course grade.

**VALUE: \$1,000**

### George Wesley Graham Prize in Ethics

The prize will be awarded annually to an MBA student in either the specialization or the Diploma program in Real Property for excellence in PROP 6200: Development Prototypes. Selection will be made based upon an assignment on a topic dealing with ethics as it affects the real property industry, as well as the final course grade.

**VALUE: \$1,000**

### The NAIOP Bursary

NAIOP, Commercial Real Estate Development Association, is a North American trade association of companies involved in the real estate industry with over 15,000 members. NAIOP Greater Toronto Chapter is the 3rd largest chapter with over 800 members. NAIOP Greater Toronto Chapter established this endowed bursary in 1997. The NAIOP Bursary is awarded annually to a full-time MBA student entering second year or with equivalent status, enrolled in either the MBA concentration or Diploma in Real Property Development. Applicants must demonstrate financial need. OSOTF guidelines apply.

**VALUE: \$1,000**

### SIOR Scholarship in Real Property

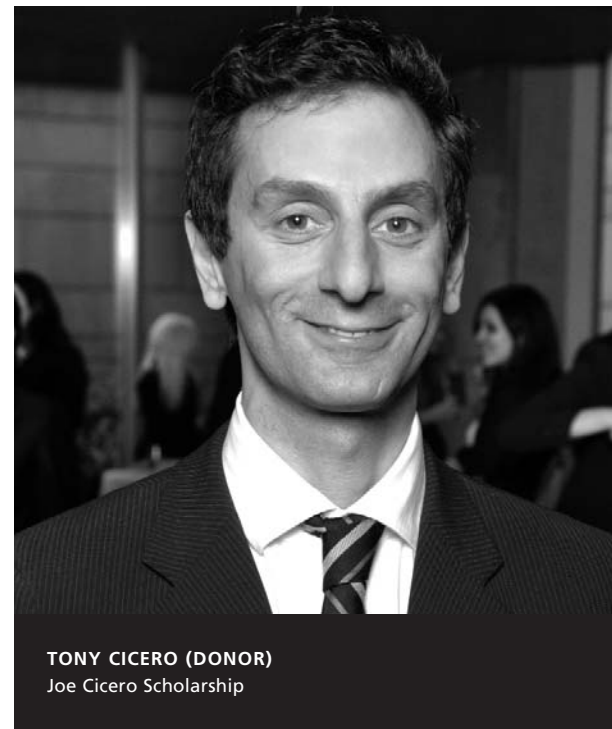
The Society of Industrial and Office Realtors (SIOR) created this annual award to recognize a second-year full-time MBA student who has demonstrated scholastic achievement. The recipient must have achieved a minimum GPA of 6.0 (B+) in first year, must be enrolled in the real property program, and must demonstrate career objectives, prior academic achievements, work experience and personal contributions to real property through the student-run Real Property Association.

**VALUE: \$1,000**

### IBI Group Award

Through a generous gift from IBI Group, this award is provided to a second-year full-time MBA student who is enrolled in the real property specialization, has achieved a minimum GPA of 6.0 (B+) and demonstrates financial need.

**VALUE: \$625**



**TONY CICERO (DONOR)**  
Joe Cicero Scholarship

The Schulich School of Business  
bursary program assists new  
and continuing Master's-Level  
students who demonstrate  
**financial need.**



"I was extremely thrilled to learn that I received the Robert Krembil MBA Entrance Award. The financial assistance generously offered by the Krembil Foundation has been of great help to me financially. It has allowed me to concentrate more of my time on studying and has encouraged me to achieve excellence in the IMBA program."

JASON (JIAN) DING (2012 IMBA CANDIDATE)  
Robert Krembil MBA Entrance Award Recipient \$25,712

## SCHULICH MASTER'S-LEVEL

# Bursaries for new and continuing students

### **MBA and IMBA Full-time Bursary**

Each semester, a limited number of bursaries are available to full-time domestic MBA, IMBA and MPA students who have demonstrated financial need.

**VALUE: Variable**

### **MBA Part-time Bursary**

Each semester, a limited number of bursaries are available to part-time domestic MBA students who have demonstrated financial need.

**VALUE: Variable**

### **International Student Emergency Bursary**

Each semester, a limited number of bursaries are available to full-time Graduate-Level students who are studying on a student visa and paying international tuition fees.

**VALUE: Variable**

### **Exchange (Study Abroad) Bursary**

Each semester a limited number of bursaries are available to full-time students who are participating in a study exchange abroad. The bursary is intended to help cover the extra expenses associated with the exchange such as travel. These bursaries are awarded to MBA, IMBA and MPA students who have demonstrated financial need.

**VALUE: \$2,000 maximum**

### **IMBA (International MBA) Work Term Tuition Bursary**

Each year the Schulich School of Business awards a work term bursary to each IMBA (International MBA) student enrolled in the Work Term abroad semester. Candidates are required to demonstrate financial need.

**VALUE: Equivalent to full-time tuition fee for the semester**

### **The Schulich School of Business Alumni Bursary**

Established by generous annual contributions of alumni and friends, the Schulich School of Business Alumni Bursary will support undergraduate and graduate Schulich School of Business students, part-time or full-time, who demonstrate financial need.

**VALUE: Variable**

#### **OSOTF (Ontario Student Opportunity Trust Fund)/OTSS (Ontario Trust for Student Support) Guidelines**

Many awards and bursaries contained in this guide indicate that students must satisfy OSOTF or OTSS residency requirements to apply. Students who have been Ontario residents for a minimum 12-month period prior to the start of their study period are eligible to apply for these awards. In addition, students must be either Canadian Citizens, Landed Immigrants or Protected Persons and must be able to demonstrate financial need.

### Schulich Case Competition Bursary

Each year, a limited number of bursaries will be awarded to students participating in business case competitions. The bursary will provide financial support for the costs of registration, travel, accommodation and other expenses related to participation in case competitions. Eligible students will be enrolled in a Schulich School of Business degree program, demonstrate financial need and be in good academic standing.

**VALUE: Variable; maximum \$5,000**

### Claridge Israel Inc. Global Leadership Bursary

Each year, students selected to participate in the Global Leadership Initiative Program may qualify for a Global Leadership Bursary. This bursary is awarded to students participating in the York-Recanati Partnership. In order to qualify for this bursary, applicants must meet qualifications for field study selection. Recipients use this funding to defray the expenses of travel and accommodation while in the field. OSOTF guidelines apply.

**VALUE: Variable**

### Schulich Travel Bursary

The Travel Bursary provides compensation to students for flight expenses to and from an academic exchange site. Recipients must demonstrate financial need. Application, plane ticket, receipt from travel agency, and boarding pass required. Deadline to apply is three weeks from completion of the exchange semester. OSOTF guidelines apply.

**VALUE: Depends on the distance traveled, maximum amount \$1,500**

### Russell and Suzy Campbell Bursary

This bursary has been established through the generosity of Russell Campbell (MBA '85) and his family. The bursary is given annually to a second-year full-time MBA student specializing in Finance who demonstrates financial need. Preference is given to a student with previous experience in investment management. OSOTF guidelines apply.

**VALUE: \$1,125 or available interest**

### General Motors of Canada Limited Bursary

Students must be in the BBA, iBBA, MBA or IMBA programs and must demonstrate financial need. Preference will be given to disabled students and then to students who have undergone personal hardship, such as the death of a parent, which resulted in financial hardship. OSOTF guidelines apply.

**VALUE: \$1,000 awarded to 5 students**

### Nawel K. Seth Loan

Each year, this loan program grants five \$1,000 loans for full-time MBA and IMBA students who have financial need. These loans are granted interest-free during the term of the loan and must be repaid in full. For further information, please consult with Schulich financial aid staff.

**VALUE: \$1,000**

### The Schulich School of Business Single Parent Bursary

The Schulich School of Business Single Parent Bursary has been established by Nicole Balan (MBA '98) and through the generous support of alumni and friends. Eligible recipients are full-time Schulich students who demonstrate financial need and self declare as a single parent with partial or sole custody of one or more dependent children under the age of eighteen.

**VALUE: \$1,000**

### The Michael and Mara Badali Bursary

The Michael and Mara Badali Bursary has been established by Salvatore M. Badali (MBA '81). The bursary provides an annual award to a deserving Schulich School of Business full-time MBA student. OSOTF guidelines apply.

**VALUE: \$500**

### Jose A. Danobeitia Award

Schulich alumnus Jose A. Danobeitia (MBA '75) has established this endowed award. The award is provided annually to a student in the MBA program who demonstrates financial need. OSOTF guidelines apply.

**VALUE: \$500**

### The Schulich School of Business International Recruitment Bursary

This bursary was created through generous contributions made by Schulich Alumni. Eligible students are enrolled in the MBA, IMBA or MPA programs, demonstrate financial need and are selected to attend the International MBA Consortium Employment Conference in Florida through the Schulich Career Centre. OSOTF guidelines apply.

**VALUE: \$300 awarded to a maximum 10 students**

### Schulich School of Business Special Program Internship Bursary

Each year, MBA, IMBA, MPA and PhD students are selected for special internship work to support not only their own research interests, but also their future career focus. Each recipient works as an Intern to a Program Director for the academic year. OSOTF guidelines apply.

**VALUE: Variable**



"Seymour Schulich Entrance Scholarship was a dream come true. This scholarship made it possible for me to pursue an MBA without the burden of financial distress."

**ABHISHEK BHASIN (MBA '10)**

Seymour Schulich MBA Entrance Scholarship \$22,000

The accomplishments of  
Schulich's Master's-Level graduates  
are **recognized**  
through the School's convocation  
awards program.



## SCHULICH MASTER'S-LEVEL

# Graduating student awards

### **CoreNet Global Scholarship in Real Property**

---

CoreNet Global (formerly NACORE), the International Association of Corporate Real Estate Executives, sponsors this award annually for an MBA student in the Real Property specialization. The recipient must achieve high academic standing in the final year of the MBA program and have made a significant contribution to the success of the program in Real Property through the activities of the Real Property Development Association.

**VALUE: \$1,000**

### **The H. Ian Macdonald Award in Public Administration**

---

H. Ian Macdonald is President Emeritus of York University. He served as President and Vice-Chancellor for more than 10 years, from 1974 to 1985. He is also Director of the MPA program and a Professor Emeritus of economics and public policy at the Schulich School of Business. He has a distinguished career in academia, government, the private sector and with international agencies. His contributions to international education have included fundraising for Canadian universities. His areas of academic research focus on the operations of government in Canada at all levels, public finance, international economic organizations and policy, as well as Canadian economic policy in the global environment. This award is presented to the MPA student with the highest GPA in his/her core courses who demonstrates financial need.

**VALUE: \$500**

### **Lorna Wright IMBA (International MBA) Graduation Award**

---

Graduating IMBA students will be eligible for consideration for this award. The award will be presented to the graduate who has contributed the most to the advancement of the IMBA program. The recipient will have made selfless contributions to the development of the IMBA program through community service within the faculty and active participation in student life. The award will be presented each year at June Convocation.

**VALUE: \$500**

### Tim Dye Memorial Scholarship

---

The MBA graduating class of 1994 created an award which is offered each year to a full-time student in the MBA program who has demonstrated a commitment to student life through involvement in extracurricular activities, student government or volunteer positions. A minimum average of 5.0 (B) is required. The recipient must show continued involvement in the second year of the MBA.

**VALUE: \$100**

### The Charles S. Mayer IMBA Medal of Excellence

---

Charles S. Mayer, Founding Director of the International MBA program, established the Charles S. Mayer IMBA Medal of Excellence in 1991. This medal honours the student graduating from the IMBA program who has demonstrated not only academic excellence and language ability, but who has also contributed significantly to student life within the School and to the ongoing excellence of the IMBA program.

**VALUE: Medal**

### Governor General's Gold Medal

---

This medal is awarded annually at Spring Convocation to a Master's-Level graduating student who has shown the highest distinction in scholarship at York University. The Senate Committee on Admissions, Recruitment and Student Assistance chooses the recipient on the basis of academic excellence.

**VALUE: Medal**

### Graduate Business Council (GBC) Academic Achievement Awards

---

The GBC acknowledges academic excellence through these awards. The Gold Award is presented to the graduating MBA, IMBA or MPA student from Spring Convocation with the highest graduating average. The Silver Award is presented to the second highest achievement and the Bronze Award is presented to the third highest academic achievement. Medals are awarded at Convocation.

**VALUE: Gold, Silver and Bronze Medals**

### Graduate Business Council Award

---

In the spring of each year, the Graduate Business Council Award is presented to the graduating MBA, IMBA or MPA student who has contributed the most to his/her program. The recipient is selected by a committee whose membership includes the Graduate Business Council Senator, the Executive Director of Student Services and International Relations and one faculty member. Students have the opportunity to present nominations to the selection committee.

**VALUE: Medal**

### The Graduate Award for Outstanding Contribution

---

This award is presented to a graduating student from the MBA, IMBA or MPA programs who demonstrated dedication to both the Schulich School of Business and fellow students. The recipient must have made a positive impact on student life through involvement in extracurricular activities such as student government, student publications, clubs, sports or other events and activities.

**VALUE: Medal**

### Hennick Medal for Academic Excellence

---

The medal will be awarded annually to the top student graduating from the JD/MBA program with the highest cumulative grade point average over their two degrees.

**VALUE: Medal**

### L.S. Shum Gold Medal for Academic Excellence, Master of Finance

---

The medal will be awarded annually to the top student graduating from the Master of Finance program, Schulich School of Business, with the highest cumulative grade point average. Awarded at the annual Fall Schulich Convocation.

**VALUE: Medal**

### Amit Kumar Graduation Award for Academic Excellence

---

Awarded to the graduating IMBA student who has achieved the highest cumulative grade point average over the five terms of the program.

**VALUE: Variable**



"Thanks to the Tanna H. Schulich MBA Entrance Scholarship, I was able to focus on my studies without having to worry about my personal finances. The scholarship enabled me to fully engage in my courses and to get the most out of my Schulich experience. In addition, it's been a frequent discussion topic with prospective employers and certainly gives me an edge in interviews."

**ZOYA ZAYLER (IMBA '10)**

Tanna H. Schulich MBA Entrance Scholarship \$22,000

# External awards

External organizations offer various scholarships open to MBA and IMBA students of the Schulich School of Business. In addition to scholarship funding, organizations such as Women in Capital Markets and Toronto Commercial Real Estate Women also provide award recipients with work internship opportunities.

## Heather L. Main Memorial Scholarship (Women in Capital Markets)

---

The Heather L. Main Memorial Scholarship is available to full-time students in their first year of the MBA or third year of the joint MBA/JD program. Applicants are asked to demonstrate their interest in pursuing careers in the Canadian capital markets, academic excellence, as well as community involvement and leadership capabilities. Applicants must submit completed application form, written statement, academic transcripts and résumé to Schulich financial aid. For further information, consult with Schulich financial aid staff.

**VALUE: 1. \$7,500;**

- 2. A paid summer internship at a participating financial institution;**
- 3. Mentoring by a Women In Capital Markets member in the final year of graduate business studies;**
- 4. Tuition-free enrollment in the Canadian Securities Course.**

## Toronto CREW Real Estate Scholarship

---

Toronto CREW (Commercial Real Estate Women) is committed to connecting young women to a commercial real estate path. Toronto CREW assists students' successful entry into the commercial real estate industry through this scholarship, continued support through a Mentorship program during the first five years working in the industry,

and on-going professional development through membership thereafter. The Toronto CREW Real Estate Scholarship is open to first-year female Schulich MBA students specializing in Real Property (specialization or Diploma). Scholarship recipients are also provided with a summer internship within the commercial real estate industry.

**VALUE: \$3,000**

## Ontario Graduate Scholarship

---

The Ontario Ministry of Training, Colleges and Universities offers the Ontario Graduate Scholarships to individuals intending to pursue Master's or Doctoral studies in a wide variety of disciplines. Applicants need not be accepted to graduate school at the time of application but must apply a year before planning to undertake their studies. International students are also welcome to apply. For further information, consult with Schulich financial aid staff.

**The value of the scholarship in 2010/2011 is \$5,000 per term or \$15,000 per year.**

**Full-time registered students in their last year of undergraduate studies must apply through their home university.**

## Canada Graduate Scholarship

---

The SSHRC (Social Sciences and Humanities Research Council of Canada) Canada Graduate Scholarships Master's program offers non-renewable twelve-month awards to students who intend to pursue full-time studies at the Master's-Level. To qualify for this program, a student must be a citizen or permanent resident of Canada. Scholarship details are available at [www.sshrc.ca](http://www.sshrc.ca). For further information, consult with Schulich financial aid staff.

**The value of the scholarship in 2010/2011 is \$17,500 per year.**

## Canadian Association of Women Executives and Entrepreneurs Scholarship (CAWEE)

---

The CAWEE Scholarship is awarded to a full-time female MBA student in her second year of study who shows a strong interest in advancing the status of women in business and demonstrates leadership and community involvement. The recipient must demonstrate academic excellence and a need for financial assistance. The student is invited as a guest of the association to attend an event and speak about her accomplishments and future plans.

**VALUE: Variable**

## The Nicol Entrepreneurial Award

---

Annual case competition at the Schulich School of Business, funded by the Wesley and Mary Nicol Charitable Foundation. Similar case competitions are held at other institutions across Canada. Students compete at the local case competition level for 1st, 2nd and 3rd prizes. The winning team from each university is entered into the national competition. Six of these teams are selected to come to Ottawa for the Nicol Finals. There is no additional prize money awarded to the national finalists or the national winner.

**VALUE: Variable**

### EXTERNAL AWARDS

The Faculty of Graduate Studies (283 York Lanes) provides an up-to-date listing of financial assistance available from outside the University through a scholarship database. A selected list of scholarships is accessible at [www.yorku.ca/grads](http://www.yorku.ca/grads).

Current award notices from external organizations are available to students for review. Please visit Schulich financial aid to view this information or check the award competitions web site at <http://www.schulich.yorku.ca/financialaid>.

### York University Awards

In addition to Schulich specific awards, York University offers several scholarships and support opportunities for MBA students. For more information, view the Faculty of Graduate Studies web site at [www.yorku.ca/grads](http://www.yorku.ca/grads)

## SCHULICH UNDERGRADUATE-LEVEL

# Entrance awards

### **Seymour Schulich BBA/iBBA Entrance Scholarship**

---

In recognition of academic excellence and merit, Seymour Schulich, CM (Hon LLD '03) has created the Seymour Schulich Entrance Scholarship. The scholarships are presented to incoming BBA and iBBA students who have demonstrated academic excellence. Recipients will have been active in their communities and have demonstrated leadership qualities either in school or through extracurricular activities.

**VALUE: \$5,500 (5 scholarships available)**

### **Tanna H. Schulich BBA/iBBA Entrance Scholarship**

---

In recognition of academic excellence and merit, Seymour Schulich, CM (Hon LLD '03) has created the Tanna H. Schulich Entrance Scholarship. The scholarships are presented to incoming BBA and iBBA students who have demonstrated academic excellence. Recipients will have been active in their communities and have demonstrated leadership qualities either in school or through extracurricular activities.

**VALUE: \$5,500 (5 scholarships available)**

### **Edith Schulich Entrance Award**

---

The Edith Schulich Entrance Award is presented to an incoming BBA or iBBA student who has demonstrated exceptional academic ability in his/her high school graduating year and demonstrates financial need. OSOTF guidelines apply. This award is non-renewable.

**VALUE: \$5,000**

### **Steven K. Hudson BBA/iBBA Entrance Award**

---

The Steven K. Hudson (BBA '81) Entrance Award to be awarded to a first-year student who has achieved first-class standing in the senior year of high-school, has shown strong entrepreneurial achievements and financial need. OSOTF guidelines apply.

**VALUE: \$5,000**

### **Nissan Canada Leadership Entrance Award**

---

The Nissan Canada Leadership Entrance Award is awarded to an incoming Schulich School of Business BBA/iBBA student who demonstrates academic excellence. OSOTF guidelines apply.

**VALUE: \$3,125**



"The Nissan Canada Leadership Entrance Award, was not just an award, or a confirmation of achievement, but more than anything it gave me the freedom of mind to pursue and focus on my education without having to worry about how to pay for it."

**LIOR VALITSKY (BBA '14)**

Nissan Canada Leadership Entrance Award \$2,500

The world's brightest students have been highly successful thanks to the **generous** contributions of donors to the School's awards program.



"The monetary value of the award is important, however, even more important to me is the intrinsic value it represents. The award was a symbol of accomplishment and recognition of my hard work which opened the doors to Schulich."

**JASMIN DHALIWAL (BBA '11)**  
Seymour Schulich BBA/iBBA Entrance Scholarship \$5,000

## SCHULICH UNDERGRADUATE-LEVEL

# Continuing student awards/bursaries

### **Ernst & Young BBA Award**

---

In recognition of academic excellence, demonstrated leadership and financial need, Ernst & Young has created the Ernst & Young Awards. The awards are given to third-year BBA and iBBA students who demonstrate academic excellence, leadership and financial need. Preference is given to students who are pursuing an Accounting specialization. Recipients will have been active in their communities and have demonstrated leadership either in student government or other extracurricular activities. OSOTF guidelines apply.

**VALUE: \$5,000**

### **HSBC President's Award for iBBA**

---

The HSBC President's Award for iBBA is presented to the student with the highest academic standing after completion of the first 90 credits of the iBBA program. The award will be presented in the fall of each year. This award has been created through a generous donation from the HSBC Bank Canada.

**VALUE: \$3,750**

### **The Toronto Dominion Bank Bursary**

---

The Toronto Dominion Bank Bursary is available to students registered in third or fourth year of the BBA and iBBA programs. Successful candidates must have a minimum 7.0 (B+) average.

**VALUE: \$3,000**

### **YUFA (York University Faculty Association) Foundation Undergraduate Scholarship**

---

The recipient of this scholarship must have completed between 60-90 credit hours, achieved the best cumulative GPA in the Schulich School and subsequently re-register at York to complete his/her undergraduate degree program.

**VALUE: \$3,000**

### **Isaac Akande Scholarship**

---

Awarded annually to a BBA, iBBA, MBA, IMBA student enrolled in first year who has been involved in extracurricular activities within the Black or wider community. The recipient will have demonstrated academic excellence and financial need.

**VALUE: \$2,000**

### **Michael Paul Sardella Award for International Studies**

Established in memory of Michael Paul Sardella who spent his last few years working in Southeast Asia, this award recognizes his passion for travel and the study of different cultures. It will be awarded to an undergraduate or graduate Schulich School of Business student to travel abroad for internships with foreign organizations as part of their international program of studies. The recipient must have a minimum GPA of 6.00 (B+) and demonstrate financial need. Recipients must be Canadian citizens, permanent residents or protected persons who are residents of Ontario and demonstrate financial need.

**VALUE: \$2,000**

### **Schulich Travel Bursary**

The Travel Bursary provides compensation to students for flight expenses to and from their academic exchange site. Recipients must demonstrate financial need. Application, plane ticket, receipt from travel agency and boarding pass are required. Deadline to apply is three weeks from completion of the exchange semester. OSOTF guidelines apply.

**VALUE: Depends on the distance traveled, maximum amount \$1,500**

### **Keun-Chang Kim Memorial Award**

This award will be given to a Schulich School of Business undergraduate student with a minimum grade point average of 7.00 (B+) who is a Canadian citizen, permanent resident or protected person and resident of Ontario, and who demonstrates financial need. Preference will be given to students involved in an academic exchange program to Korea or who demonstrate a commitment to community volunteerism. This award can be given in addition to other exchange program funding. Young-Rahn Woo has established this award in loving memory of her father.

**VALUE: \$1,250**

### **Jack Goodfield Memorial Bursary**

This bursary is awarded each fall on the basis of academic excellence and demonstrated financial need. The bursary is awarded each fall to a fourth-year BBA/iBBA student who has specialized in accounting studies.

**VALUE: \$1,000**

### **Lawrence S. (Al) Rosen BBA Award**

This award is given to one third year BBA/iBBA student who demonstrates academic excellence, leadership and financial need. Preference is given to students who are pursuing an Accounting specialization. Recipients will have been active in their community and have demonstrated leadership either in student government or extracurricular activities. The student will demonstrate academic excellence and will be a Canadian citizen, permanent resident or protected person and resident of Ontario who demonstrates financial need. In recognition of academic excellence, demonstrated leadership and financial need, Al Rosen has created the Lawrence S. (Al) Rosen BBA Award.

**VALUE: \$1,000**

### **The Schulich School of Business Single Parent Bursary**

The Schulich School of Business Single Parent Bursary has been established by Nicole Balan (MBA '98) and through the generous support of alumni and friends. Eligible recipients are full-time Schulich students who demonstrate financial need and self declare as a single parent with partial or sole custody of one or more dependent children under the age of eighteen.

**VALUE: \$1,000**

### **Toronto and Area Road Builders Association Scholarship**

The Toronto and Area Road Builders Association Scholarship is awarded each year a student entering fourth year of the BBA/iBBA, on the basis of high academic standing.

**VALUE: \$1,000**

### **Winchcombe Scholarship Fund**

In memory of Owen and Millicent Winchcombe, two annual scholarships are awarded in the fall for scholastic achievement to each of the top students entering third and fourth years of the BBA/iBBA programs.

**VALUE: \$1,000**

### **The Thomas H. Beechy Award for International Exchange**

This award is available to a second or third-year BBA/iBBA student who intends to participate in an academic exchange, demonstrates financial need, and has achieved a minimum 6.0 (B) in Schulich courses. OSOTF guidelines apply.

**VALUE: \$1,000**

### **John Ferzoco Memorial Scholarship**

Awarded to an entering fourth-year BBA/iBBA student on the basis of high academic standing achieved in third-year.

**VALUE: \$1,000**

### **General Motors of Canada Limited Bursary**

The General Motors of Canada Limited Bursary is awarded first to disabled students of the Schulich School of Business MBA/IMBA or BBA/iBBA programs, and then to students who have undergone a personal hardship, such as the death of a parent, having the effect of putting them under financial strain. OSOTF guidelines apply.

**VALUE: \$1,000**

### **Federation of Chinese Canadian Professionals Administrative Award**

A scholarship is awarded annually to a third-year undergraduate student in the BBA/iBBA programs based on academic excellence and financial need.

**VALUE: \$750**

### **Nicholas Gareri Award**

This award is offered annually to a first-year BBA/iBBA student who has demonstrated financial need. OSOTF guidelines apply.

**VALUE: \$500**

### **Discretionary Scholarships**

York University provides the Schulich School of Business annual funding for discretionary scholarships to recognize and support full-time BBA/iBBA students who have demonstrated ongoing academic excellence, minimum GPA of 7.0 (B+) and financial need. Two students from each of the second, third and fourth years of the BBA/iBBA programs are selected to receive this scholarship.

**VALUE: \$500**

### **Michael A. Katigbak Award**

---

This award has been established through a gift from Michael A. Katigbak, whose focus is on complementary medicine. It is awarded annually to a student with demonstrated financial need who is entering his/her first year of the BBA/iBBA program. OSOTF guidelines apply.

**VALUE: \$500**

### **The Sam G. and Rose T. Reisman Award**

---

This award has been established by Sam G. and Rose T. Reisman to provide an annual award to a deserving York University undergraduate student with a preference given to those students who are affiliated with the Schulich School of Business. Through this award, the Reisman family is pleased to show their support for York University students. OSOTF guidelines apply.

**VALUE: \$500**

### **Class of '97 BBA Bursary**

---

Each year, a full-time BBA/iBBA student is selected to receive this bursary. The selected student will be in good standing, registered as a full-time student in the BBA/iBBA programs and demonstrates financial need. OSOTF guidelines apply.

**VALUE: \$500**

### **The James Bray Bursary in Memory of Mrs. Anne Bray**

---

This bursary is open to BBA/iBBA students who demonstrate financial need to achieve their academic goals. OSOTF guidelines apply.

**VALUE: \$500**

### **MBA Class of 2007 Schulich Ambassador Award**

---

The MBA Class of 2007 Schulich Ambassador Award is awarded to a full-time undergraduate student at the Schulich School of Business who demonstrates academic excellence, strong leadership and value-added judgment. Students must have a minimum 6.50 GPA and have completed a minimum of 50 hours in the Schulich Ambassador Program. The student must demonstrate financial need and be a Canadian citizen, permanent resident or protected person and a resident of Ontario.

**VALUE: \$500**

### **Michael Bond Memorial Scholarship**

---

Awarded to a fourth-year BBA/iBBA student based upon academic achievement. Student must demonstrate a special interest in the field of Operations Management and Information Systems or in the field of Marketing.

**VALUE: \$400**

### **The Joshua Tan Memorial Scholarship**

---

The BBA Class of 1996 has established this scholarship in memory of classmate Joshua Tan. The scholarship is awarded to a fourth-year BBA/iBBA student with a specialization in Finance who has achieved a minimum GPA of 7.0 (B+).

**VALUE: \$350**

### **Maritime Life Award**

---

This award is available to a third-year BBA/iBBA student. To be considered, a student must have a cumulative grade point average of 6.0 (B) and demonstrate financial need. OSOTF guidelines apply.

**VALUE: \$300**

### **Bruno Amadi Bursary**

---

This bursary has been established through a gift from Bruno Amadi (BBA '79). It is awarded to a student who has completed the equivalent of at least one full year of the BBA/iBBA programs with a minimum average of 6.0 (B), and a specialization in either finance or marketing. OSOTF guidelines apply.

**VALUE: \$300**

### **A.L. Tune Bursary**

---

In memory of A.L. Tune, a respected leader of Ontario credit unions, the Ontario Credit Union Charitable Foundation provides a bursary to assist undergraduate students in their third or fourth years of the BBA/iBBA programs. Selection is based on financial need and academic excellence. OSOTF guidelines apply.

**VALUE: \$250**

### **Stanley L. Warner Memorial Award**

---

This award was established in memory of Stanley L. Warner, Schulich Professor of statistics and economics, to celebrate his many contributions to the School and his field. The Schulich School presents the award each year to recognize a third or fourth-year BBA/iBBA's academic achievement and

extracurricular activities or contribution to the community and/or university life.

**VALUE: \$250**

### **Gordon Charlton Shaw Bursary**

---

Through a generous donation from Schulich Professor Emeritus Gordon Shaw, two BBA/iBBA students will receive bursaries to assist them in second or third-year of their studies. Selection is based on financial need and strong academic standing. OSOTF guidelines apply.

**VALUE: \$250**

### **Gordon Charlton Shaw Achievement Award**

---

Through a generous donation from Schulich Professor Emeritus Gordon Shaw, the Gordon Charlton Shaw Achievement Award is awarded annually to a third-year BBA/iBBA student who has demonstrated academic excellence and has made a significant contribution to student life.

**VALUE: \$200**

### **Bernandine Nightingale Memorial Foundation Marketing Scholarship**

---

The Bernandine Nightingale Scholarship is awarded to a fourth-year BBA/iBBA student specializing in marketing who demonstrates strong academic potential.

**VALUE: \$50**

### **The BBA/iBBA Invitational Conference and Case Competition Award**

---

The purpose of this award is to provide financial assistance to BBA and iBBA students who have been invited to attend competitions and to act as more than just a participant in a conference. The purpose of this award is to provide some financial assistance; it is not intended to cover all travel/competition/conference fees.

**VALUE: Variable**

### **The Schulich School of Business Alumni Bursary**

---

Established by generous annual contributions of alumni and friends, the Schulich School of Business Alumni Bursaries will support undergraduate and graduate Schulich School of Business students, part-time or full-time, who demonstrate financial need.

**VALUE: Variable**

## SCHULICH UNDERGRADUATE-LEVEL

# Graduating awards

### **Alan and Esther Hockin Achievement Award**

---

This award is presented to the graduating BBA/iBBA student who has achieved the highest distinction in academic standing.

**VALUE: \$500**

### **Gordon Charlton Shaw Achievement Award**

---

Through a generous donation from Schulich Professor Emeritus Gordon Shaw, an award is given annually to a graduating student in the BBA/iBBA programs who has demonstrated academic excellence and has made a solid contribution to student life in the program.

**VALUE: \$200**

### **Governor General's Silver Medal**

---

This medal is awarded annually at the Spring Convocation to a graduating student in the final year of an honours program who has shown the highest distinction in scholarship at York University. The recipient is chosen on the basis of academic excellence by the Senate Committee on Admission, Recruitment and Student Assistance.

**VALUE: Medal**

### **Murray G. Ross Award**

---

Named in honour of York University's Founding President, this award is presented annually to a graduating student for scholarship and outstanding participation in undergraduate student life.

**VALUE: Medal**

### **Jack F. Graydon Memorial Award**

---

This award is given in memory of Jack F. Graydon, a founder of the Professional Marketing Research Society and a pioneer in the marketing research industry in Canada. The award is given to the graduating student who is judged to have achieved the highest proficiency in marketing research and related courses.

**VALUE: Book**



"Receiving the Edith Schulich Entrance Award was an honour and gave me financial peace of mind. I was able to focus my attention on my education, rather than worry about how I was going to pay for it. At the same time, it encouraged me to continue striving for success and demonstrating the level of excellence that the Schulich School of Business is known for."

**KEVIN KANG (BBA '13)**

Edith Schulich BBA/iBBA Entrance Award \$5,000

## SCHULICH PhD-LEVEL AWARDS

# Schulich School of Business awards

### Robert Krembil PhD Award

---

Robert Krembil, CM (MBA '71, Hon LLD '00) has created this award to recognize the academic accomplishments of the PhD program. Each year, an incoming PhD student will be selected to receive this renewable award. The selected scholar will have shown academic excellence, working experience, financial need, demonstrated leadership and clear contributions in community life. To receive the award in second year, the recipient will be required to maintain academic excellence in his/her studies.

**VALUE: \$20,000 total**  
**(\$10,000 in year one and \$10,000 in year two)**

### Schulich Entrance Scholarships of Merit for PhDs

---

In the spring of 1996, Seymour S. Schulich, CM (Hon LLD '03) made a generous donation to York University to support the on-going activity in the Schulich School. The Entrance Award of Merit for PhDs was created to recognize and support academic excellence. Four scholarships are available each year.

**VALUE: \$12,100**

### Invesco Trimark Doctoral Scholarship

---

The Invesco Trimark Doctoral Scholarship will be awarded each year to an entering student in the PhD program who has chosen finance as a major area of specialization. The successful recipient will have demonstrated exceptional academic ability in previous university studies. The award is renewed in the second-year on the condition that the student maintain an A- average in first year coursework.

**VALUE: \$10,000 total**  
**(\$5,000.00 in year one and \$5,000 in year two)**

### International Graduate Student Fellowship

---

Incoming international students with outstanding academic qualifications may be nominated for a limited number of International Graduate Student Fellowships. The objective of this award is to provide opportunities for highly qualified international PhD students to attend Schulich and pay tuition at the domestic rate. Students holding an International Graduate Fellowship may do so for a maximum period of four years. Renewability is subject to continued academic excellence.

**VALUE: \$5,500**

### PhD Doctoral Research Award in Women in Management

---

The women alumni of the Schulich School of Business, in celebration of 25 years of management education at the School, have established a research award for Doctoral work in the field of Women in Management. The recipient must be a full-time Doctoral student.

**VALUE: \$1,500**

### Anthony P. Cunliffe Award

---

In memory of an active Doctoral student and teacher, family and friends have established the Anthony P. Cunliffe Award. The award is awarded to an entering full-time Doctoral student with an interest in the organizational studies area. Preference is given to applicants with relevant work experience.

**VALUE: \$500**

### The Robert Cuff Fellowship

---

The Graduate Program in History and the Schulich School of Business at York University created the Robert Cuff Fellowship in honour of the memory of Professor Robert Cuff, an internationally celebrated scholar who taught in both the York History Department and the Schulich School of Business.

The Robert Cuff Fellowship provides travel grants to Masters or Doctoral students researching US topics. Eligible students must be enrolled full-time in the History Department or the Schulich School of Business. Applications are accepted from both Masters and Doctoral students, but preference is given to Doctoral students. Award recipients are selected based upon academic ability, financial need and a proposal explaining how research travel in the United States will contribute to their scholarly objectives.

**VALUE: Variable, with a maximum amount of \$1,500**

# York University and External awards

### York Graduate Scholarship

---

York University offers a limited number of scholarships to students entering programs at the Master's and Doctoral levels. There are no application forms for these scholarships. Offers are made by the graduate programs to selected applicants who have unequivocal "A" standing in their previous two years of study. Selection is made at admission.

**VALUE: \$2000**

### Fieldwork Costs Fund

---

This Fund was established for PhD students to defray the cost of theses and dissertation research that must be carried out "in the field."

**A maximum of \$5,000 will be awarded to each individual recipient.**

### Research Cost Fund

---

This Fund was established to help subsidize students' own research expenses that are above and beyond those costs that are typically associated with graduate work, such as travel to sources of research, payment of subjects, supplies, services and photocopying. The Fund generally does not cover books, conference costs, subsistence and tuition fees. ("Generally" means that the Committee will award funds if it is convinced that the expenses are essential for the completion of the research and/or a cheaper alternative is not available.) All full-time registered graduate students who are members (past and present) of CUPE are eligible for a grant. Master's students should note that Doctoral students take priority. Application forms are available on the York Faculty of Graduate Studies web site at the beginning of the Fall and Winter sessions. Deadlines for application are set by individual programs.

**VALUE: Variable**

### Teaching Assistantships

---

A stipend may be paid to a candidate who teaches in one of the York Faculties or colleges. Normally, such teaching will consist of tutorial or seminar work in a time-tabled course in which the lectures are given by a full-time member of Faculty, this teaching being considered equal, when preparation is counted, to no more than ten hours' of work per week.

### Commonwealth Scholarship and Fellowship Plan

---

These funds are available to graduate students for study in a Commonwealth country other than their own. The scholarships and fellowships include funds for tuition, travel, living expenses and books. They are normally tenable for two academic years. For further information, write to The Canadian Commonwealth Scholarship and Fellowship Committee, c/o AUCC, 151 Slater Street, Ottawa, Ontario, K1P 5H3

**VALUE: Variable**

### Ontario Graduate Scholarship

---

The Ontario Ministry of Training, Colleges and Universities offers the Ontario Graduate Scholarships to individuals intending to pursue Master's or Doctoral studies in a wide variety of disciplines. Applicants need not be accepted to graduate school at the time of application but must apply a year before planning to undertake their studies. International students are welcome to apply. At York, they must submit their application to their graduate program by its preset deadline.

**The value of the scholarship is \$5,000 per term or \$15,000 per year.**

### Social Sciences and Humanities Research Council (SSHRC) Doctoral Fellowship and Canada Graduate Scholarship (CGS)

---

The Social Sciences and Humanities Research Council offers two types of awards for Doctoral-Level study to students who have demonstrated a high standard of academic achievement in undergraduate and graduate studies: (i) SSHRC Doctoral Fellowships; and (ii) Canada Graduate Scholarships Program – Doctoral Scholarships. Applicants apply for both awards by completing one application form. SSHRC considers all eligible applicants for both awards. The deadline for the submission of applications from full-time registered students is set by the Graduate program office in early fall. Applicants not registered at a university must apply directly to the Council; this deadline is posted on [www.SSHRC.ca](http://www.SSHRC.ca).

**SSHRC Doctoral fellowships, tenable at Canadian universities or abroad, are valued at \$20,000 per annum. CGS Doctoral Scholarships are valued at \$35,000 per annum and are tenable only at recognized universities in Canada.**

### Elia Scholars Program

---

The Elia Scholars program is York University's most prestigious graduate award, enabling York to attract domestic and international Doctoral students of the highest possible calibre, and ensuring that those students have the opportunity to participate in York's distinguished graduate programs (<http://www.yorku.ca/grads/>). This commitment to excellence at the highest level of academic study both commemorates a distinguished benefactor of the University and his family, and reinforces York's reputation for and commitment to excellence. All students entering a full-time Doctoral program at York University are eligible for appointment as Elia Scholars. For terms of the award, see [www.yorku.ca/grads/financial](http://www.yorku.ca/grads/financial)

# Student loan programs

## Ontario Student Assistance Program At A Glance

### OSAP

For detailed information regarding the Ontario Student Assistance Program, view the OSAP web site at <http://osap.gov.on.ca>.

### Eligibility

Students must be enrolled in full-time studies. Full-time students may be eligible for the following programs:

- Canada Student Loans
- Ontario Student Loans

The following factors are considered:

- You must be a Canadian citizen, permanent resident, or have Protected Person status.
- Be an Ontario Resident for 12 consecutive months prior to the start of your study period (Ontario Student Loans).
- Be a full-time student (for undergraduate students, it means you must be registered in at least nine credits per term).
- Have demonstrated financial need based on the government's assessment.

Loans are payment-free and interest-free while you are enrolled as a full-time student. OSAP is a need-based program and is intended to contribute to a student's educational costs, not to replace the financial responsibilities of the student and his/her family.

### Maximum OSAP Assistance

For OSAP maximums, please consult the OSAP web site. Please note that OSAP maximum loan amounts do not cover the full cost of MBA program tuition.

### How to Apply

Full-time students may apply on-line at no charge through the OSAP web site at <http://osap.gov.on.ca>. Once your application has been processed, you will receive by mail a notice of assessment indicating the amount of your funding.

### OSAP Deadlines

An OSAP application must be submitted for each academic year. It is recommended that you apply approximately ten weeks before the start of your study period. For two-term and three-term programs, the following deadlines apply:

- If your application is received within the first 45 days of your study period, you will be eligible to receive OSAP funding for your entire study period.
- If your application is received after the first 45 days of your study period and no later than 90 days before the end of your study period, you will be eligible to receive OSAP funding from the date your application is received.
- If your application is received less than 90 days before the end of your study period, you will not be eligible to receive OSAP funding.

### PART-TIME STUDIES

If you are a part-time student (enrolled in 7 1/2 credits or less), you may apply for a Part-time Canada Student Loan.

Students may download an application on the forms webpage of the OSAP web site at <http://osap.gov.on.ca>.

### OUT-OF-PROVINCE STUDENTS

For information regarding other provincial student loan programs, please consult the web site of the provincial student assistance office.

Out-of-province student assistance information and web site links are available at <http://sfs.yorku.ca/aid/outofprovince>.

### Royal Bank Student Line-of-Credit Program

The Royal Bank currently offers a Preferred Banking package to Schulich students. Banking services include:

- Royal Credit Line for Students – Preferred Interest Rate
- Royal Bank Student Visa Credit Card
- Royal Bank Student Banking Package
- Royal Direct Internet and Telephone Banking

The Royal Credit Line for Students provides students of the Schulich School of Business with a personalized loan to help finance their education. Students may arrange their credit line before the academic year begins.

The Royal Bank provides one-on-one professional financial advice to Schulich students through a Relationship Account Manager, helping students to manage their loans while at Schulich and following graduation. Representatives from the Royal Bank are available to meet with students on an individual basis at Schulich during the first two weeks of the Fall and Winter terms.

While enrolled in the MBA program, interest must be paid on the amount owing each month. The interest rate charged as of 2009/2010 is at a preferred rate of prime plus 1%. Following the completion of studies, graduates have a six-month grace period during which only monthly interest is continued to be paid.

To find out more about this program, please contact Hitenkumar (Hiten) Patel at the Royal Bank branch below:

Royal Bank (Hwy 7 and 400 Branch)  
3300 Highway #7 West, Suite 100  
Concord, Ontario L4K 4M3  
(905) 738-3225  
E-mail: [hitenkumar.patel@rbc.com](mailto:hitenkumar.patel@rbc.com)

For general information, please contact the Royal Bank at 1-800-769-2555 (Royal 5-5), 24 hours a day, 7 days a week, or visit their web site at [www.royalbank.com](http://www.royalbank.com).

### Projected Program Costs

FULL-TIME MBA AVERAGE PROGRAM COSTS PER TERM* (FOUR MONTHS)	
Books / course materials	\$1,500-2,000
Rent (on-campus apartment)	\$3,000-3,800
Food	\$1,000
Clothing	\$450
Health and dental insurance	\$185 (domestic) or \$450 approx. (international)
Local public transportation	\$400 (if living off-campus)
Entertainment/recreation	\$500
Miscellaneous	\$300
<b>Total Average Costs Per Four Month Term (excluding tuition fees)</b>	<b>\$7,335-8,635 (domestic) or \$7,600-8,900 (international)</b>

\* The MBA program (full-time studies) is normally a four-term program. The IMBA program is a five-term program

Please refer to the York University Office of Student Financial Services web site at <http://sfs.yorku.ca> for current tuition fee rates

### Loan Program for International MBA Students From India

Schulich Business School, in partnership with Scotiabank Group and HDFC Bank is now able to offer students enrolling in its MBA programs in India and Canada the following banking facilities:

- Education Loans from HDFC Bank in India to finance studies in India and/or Canada. This would also facilitate visa requirements
- Utilize other banking facilities provided by HDFC Bank
- Open an account with any Scotiabank branch in Canada, while still in India

- Remit tuition fees and other from India to Canada easily, safely and quickly
- Access to banking services in Canada, including debit and credit cards

For more information please contact:

Neeraj Bassi  
Email: [neeraj.bassi@hdfcbank.com](mailto:neeraj.bassi@hdfcbank.com)

or

Sudesh Shetty  
Email: [sudesh.shetty@hdfcbank.com](mailto:sudesh.shetty@hdfcbank.com)

## CREATE A LEGACY

# Supporting student education

## Help create a **new generation of leaders**

at the Schulich School of Business by supporting scholarships, awards and bursaries for current and future students.

Scholarships, awards and bursaries offer meaningful opportunities for alumni and friends to support and encourage deserving students in their pursuit of a quality education. We look forward to working with you to ensure your gift is directed according to your wishes.

Should you choose to create an endowment of \$25,000 or more, you will be invited to name your award, bursary or scholarship. The name and description of your award will appear in various annual print publications and on the Schulich web site.

You may be eligible to have your gift matched. For example, the Ontario Government currently matches, dollar for dollar, gifts received by the School that are designated toward endowments to support students with financial need. Through the Ontario Trust for Student Support (OTSS), you can establish a new endowment to support graduate or undergraduate Schulich students,

in perpetuity, with a minimum gift of \$12,500 (which will be matched to \$25,000 through OTSS). In addition, many companies will match gifts from Schulich alumni and friends who work for them.

Alumni who make a gift of \$1,000 or more to the Schulich School of Business will have their name appear on the Alumni Donor Wall in the Seymour Schulich Building. Alumni, friends and organizations who contribute \$5,000 or more will have their name appear on the School's Major Donor Wall.

Whether your contribution is an annual or endowed gift, your financial support has an immediate and lasting impact. Your support of Schulich's financial aid program will honour academic commitment, encourage achievement and enable students who lack sufficient financial means to confidently continue their studies.

### YOU CAN SUPPORT SCHULICH'S FINANCIAL AID PROGRAM IN MANY WAYS

- Make a gift towards an existing award, bursary or scholarship.
- Create a new named award, scholarship or bursary that is supported by your annual donation.
- Establish a permanent endowment that will fund one or more annual awards in perpetuity and create a lasting legacy at Schulich.

To find out more about creating your own student award or making a gift to one of our existing scholarships or bursaries, please contact:

**The Office of Development and Alumni Relations  
Schulich School of Business:  
(416) 650-8050  
E-mail: [alumni@schulich.yorku.ca](mailto:alumni@schulich.yorku.ca)**



GARY MCKINNON, MBA, 1970

# Schulich donor spotlight

From an early age, my parents taught me the importance of a formal education. With their **encouragement and support**, they provided me with the opportunity to attend the Schulich School of Business.

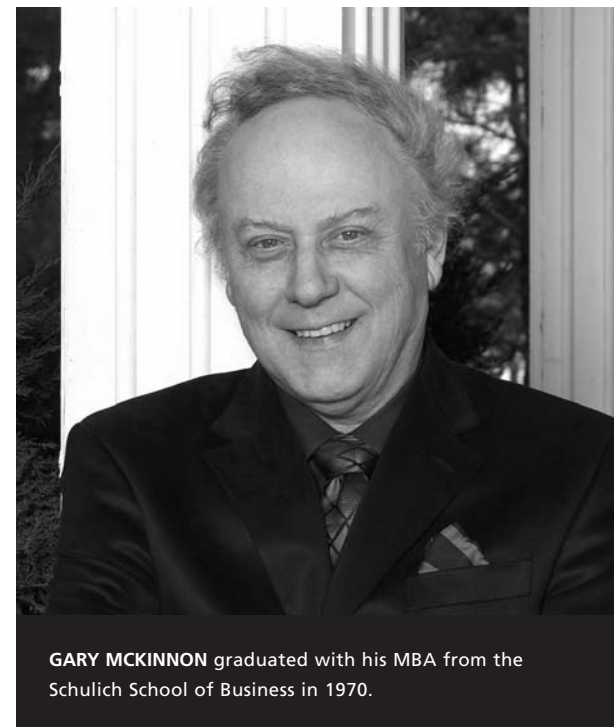
Graduating from Schulich in 1970, I was the first member of the McKinnon family to complete university.

I fondly remember the time I spent attending Schulich and, in particular, the high quality of the School's program, professors and students. I wanted to give students who would not otherwise have the means, the chance to attend Schulich.

In honour of my parent's memory, I made a donation of \$25,000 to the Schulich School of Business for student financial aid. I am very pleased that this donation has been matched by the Ontario Government through its Ontario Trust for Student Support (OTSS) program and endowed in perpetuity at York University for years to come.

The result of this endowment is the creation of the **McKinnon Family MBA Entrance Award**, which is provided each year to an incoming MBA or IMBA student in recognition of academic excellence and merit. For selection, students must also demonstrate financial need.

Some students have the ability, but not the means, to attend Schulich. It is my fervent hope that this financial contribution, in some modest way, will aid future business leaders in their pursuit of excellence.




GARY MCKINNON graduated with his MBA from the Schulich School of Business in 1970.



# Award index

- A.L. Tune Bursary (pg 20)  
 Alan and Esther Hockin Achievement Award (pg 21)  
 Alan and Esther Hockin Award in International Study (pg 7)  
 Allen T. Lambert Scholarship (pg 4)  
 Amit Kumar Graduation Award for Academic Excellence (pg 15)  
 Andrew J. Sherwin Bursary (pg 10)  
 Anthony P. Cunliffe Award (pg 22)  
 BBA/IBBA Invitational Conference and Case Competition Award (pg 20)  
 Bernadine Nightingale Memorial Foundation Marketing Scholarship (pg 20)  
 Bernie Kom Memorial Award (pg 4)  
 Bickell Internship Award in Arts and Media Administration (pg 9)  
 Brokers Trust Insurance Group Award in Memory of Gena Giansante (pg 4)  
 Bruno Amadi Bursary (pg 20)  
 Canadian Association of Women Executives and Entrepreneurs Scholarship (CAWEE) (pg 16)  
 Carol Anne Letheren Entrance Award (pg 4)  
 Carol Anne Letheren Women's MBA Award (pg 6)  
 Case Competition Marketing Award (pg 11)  
 Chandra Wijaya Award in Financial Engineering (pg 10)  
 Charles S. Mayer IMBA Medal of Excellence (pg 15)  
 Citibank President's Award (pg 10)  
 Claridge Israel Inc. Global Leadership Bursary (pg 13)  
 Class of 1969 Centennial Fellows Award (pg 7)  
 Class of '97 BBA Bursary (pg 20)  
 Class of 2008 Graduate Business Council Award (pg 7)  
 Commonwealth Scholarship and Fellowship Plan (pg 23)  
 CoreNet Global Scholarship in Real Property (pg 14)  
 Dean's International Scholarship (pg 3)  
 Dennis Starritt MBA Award (pg 8)  
 Discretionary Scholarships (pg 19)  
 Edith Schulich Entrance Award (pg 17)  
 Elia Scholars Program (pg 23)  
 Elisa Di Bartolomeo-Di Lorenzo GTHBA Prize in Government Relations (pg 11)  
 Ernst & Young BBA Award (pg 18)  
 Exchange (Study Abroad) Bursary (pg 12)  
 Federation of Chinese Canadian Professionals Administrative Award (pg 19)  
 Fieldwork Costs Fund (pg 23)  
 Foundation for Better Communities Award for Outstanding Leadership in Business Ethics (pg 6)  
 Frederick G. Gardiner Scholarship (pg 5)  
 General Motors of Canada Limited Bursary (pg 13, 19)  
 George Gardiner Award in Arts and Media (pg 9)  
 George Wesley Graham Prize in Ethics (pg 11)  
 Gordon Charlton Shaw Achievement Award (pg 20, 21)  
 Gordon Charlton Shaw Bursary (pg 20)  
 Governor General's Gold Medal (pg 15)  
 Governor General's Silver Medal (pg 21)  
 Graduate Award for Outstanding Contribution (pg 15)  
 Graduate Business Council Academic Achievement Awards (pg 15)  
 Graduate Business Council Award (pg 15)  
 Graduating Class of '94 Full-time Scholarship (pg 8)  
 Graduating Class of '94 Part-time Scholarship (pg 8)  
 Great-West Life, London Life and Canada Life Award (pg 10)  
 Gregory Misztela MBA Award (pg 8)  
 Harry Steele Entrance Award (pg 3)  
 Heather L. Main Memorial Scholarship (Women in Capital Markets) (pg 16)  
 Hennick Medal for Academic Excellence (pg 15)  
 Hennick Scholars Program (pg 3)  
 HSBC President's Award for iBBA (pg 18)  
 H. Ian Macdonald Award in Public Administration (pg 14)  
 Ian Lithgow Memorial Award (pg 4)  
 IBI Group Award (pg 11)  
 Imasco Awards in Arts and Media Administration (pg 9)  
 IMBA (International MBA) Work Term Tuition Bursary (pg 12)  
 International Graduate Student Fellowship (pg 22)  
 International Student Emergency Bursary (pg 12)  
 International Student Fellowship (pg 4)  
 Invesco Trimark Doctoral Scholarship (pg 22)  
 Irwin Allen Nadal Entrance Award (pg 5)  
 Isaac Akande Scholarship (pg 7, 18)  
 Jack F. Graydon Memorial Award (pg 21)  
 Jack Goodfield Memorial Bursary (pg 19)  
 James Bray Bursary in Memory of Mrs. Anne Bray (pg 20)  
 James Foy Award (pg 8)  
 James Gillies Award (pg 8)  
 Joe Cicero Scholarship (pg 7)  
 John Ferzoco Memorial Scholarship (pg 19)  
 John Hunkin Financial Services Award (pg 10)  
 Jose A. Danobeitia Award (pg 13)  
 Joshua Tan Memorial Scholarship (pg 20)  
 Joyce and Fred Zemans Scholarship at York University (pg 4)  
 Kamlini Kumar Memorial Award (pg 8)  
 Kenneth Laundry Entrance Scholarship (pg 5)  
 Keun-Chang Kim Memorial Award (pg 19)  
 Lake Ontario Steel Entrance Scholarship (pg 5)  
 L.S. Shum Gold Medal for Academic Excellence, MF (pg 15)  
 Lawrence Bloomberg Entrance Award (pg 3)  
 Lawrence S. (Al) Rosen BBA Award (pg 19)  
 Lorna Wright IMBA Graduation Award (pg 14)  
 Louis J. Brody Q.C. Entrance Scholarship (pg 5)  
 Maritime Life Award (pg 20)  
 Mark S. Orlan Award (pg 10)  
 Marshall A. Cohen Entrance Award (pg 3)  
 Master's-Level Case Competition Conference Award (pg 8)  
 Matthew Badeau Award (pg 7)  
 Max Wolfe Memorial Scholarship (pg 5)  
 MBA and IMBA Full-time Bursary (pg 12)  
 MBA Class of 2007 Schulich Ambassador Award (pg 20)  
 MBA Part-time Bursary (pg 12)  
 MBA/JD Joint Student Association Award (pg 10)  
 McKinnon Family MBA Award (pg 5)  
 Michael A. Katigbak Award (pg 20)  
 Michael and Mara Badali Bursary (pg 13)  
 Michael Bond Memorial Scholarship (pg 20)  
 Michael Paul Sardella Award for International Studies (pg 7, 19)  
 Michael R. Bigger MBA Award (pg 7)  
 Miles Spencer Nadal Entrance Award (pg 5)  
 Morguard Award (pg 11)  
 Murray G. Ross Award (pg 21)  
 NAIOP Bursary (pg 11)  
 Nawel K. Seth Loan (pg 13)  
 Nicholas Gareri Award (pg 19)  
 Nicol Entrepreneurial Award (pg 16)  
 Nissan Canada Leadership Entrance Award (pg 17)  
 Nonprofit Internship Bursary (pg 11)  
 Olanrewaju Olowoyeye Entrance Award (pg 5)  
 Onex Award in Arts and Media Administration (pg 9)  
 Ontario Graduate Scholarship (pg 16, 23)  
 Peter F. Bronfman Entrance Award (pg 4)  
 Peter F. Bronfman Scholarship of Merit (pg 3)  
 Peter T. Zarry MBA Award (pg 5)  
 PhD Doctoral Research Award in Women in Management (pg 22)  
 Pratt & Whitney Canada Inc. International MBA Award (pg 10)  
 Renee Anne Nadal Entrance Award (pg 5)  
 Research Cost Fund (pg 23)  
 Robert Cuff Fellowship (pg 7, 22)  
 Robert J. Gemmill MBA/JD Award of Excellence (pg 10)  
 Robert Krembil MBA Award (pg 2)  
 Robert Krembil MBA Entrance Award (pg 2)  
 Robert Krembil PhD Award (pg 22)  
 Robert Krembil Scholarship of Merit (pg 2)  
 Robert L. Rossman MBA Award (pg 7)  
 Russell and Suzy Campbell Bursary (pg 13)  
 Sam G. and Rose T. Reisman Award (pg 20)  
 Schulich Case Competition Bursary (pg 13)  
 Schulich Entrance Scholarships of Merit for PhDs (pg 22)  
 Schulich Scholarship for Entrepreneurship (pg 10)  
 Schulich School of Business Alumni Award (pg 8)  
 Schulich School of Business Alumni Bursary (pg 12, 20)  
 Schulich School of Business International Recruitment Bursary (pg 13)  
 Schulich School of Business Single Parent Bursary (pg 13, 19)  
 Schulich School of Business Special Program Internship Bursary (pg 13)  
 Schulich Travel Bursary (pg 13, 19)  
 Scotiabank Scholarship in International Business (pg 3)  
 Seymour Schulich BBA/iBBA Entrance Scholarship (pg 17)  
 Seymour Schulich MBA Entrance Scholarship (pg 3)  
 SIOR Scholarship in Real Property (pg 11)  
 Sony of Canada MBA Scholarship (pg 6)  
 SSHRC (Social Sciences and Humanities Research Council of Canada) Canada Graduate Scholarships (pg 16, 23)  
 Stanley and Frances Weigen Award (pg 8)  
 Stanley L. Warner Memorial Award (pg 20)  
 Steven K. Hudson BBA/iBBA Entrance Award (pg 17)  
 Steven K. Hudson Finance Scholarship (pg 9)  
 Steven K. Hudson MBA Bursary in Financial Services (pg 10)  
 Stuart McAllister Award (pg 9)  
 Susan Barnes and Daniel Pauze Award for Business and Sustainability (pg 8)  
 Tanna H. Schulich BBA/iBBA Entrance Scholarship (pg 17)  
 Tanna H. Schulich MBA Entrance Scholarship (pg 3)  
 Terence G. Kawaja MBA/JD Award (pg 10)  
 Thomas Beck MBA Award (pg 6)  
 Thomas H. Beechy Award for International Exchange (pg 19)  
 Thomas J. Bata IMBA Entrance Award (pg 5)  
 Tillo E. Kuhn International Student Award (pg 7)  
 Tim Dye Memorial Scholarship (pg 15)  
 Toronto and Area Road Builders Association Scholarship (pg 19)  
 Toronto CREW Real Estate Scholarship (pg 16)  
 Toronto Dominion Bank Bursary (pg 18)  
 Union Carbide Scholarship (pg 8)  
 Union Gas MBA Award (pg 5)  
 Victor Murray Bursary (pg 11)  
 W. David Wood Award (pg 9)  
 Wigwamen Scholarship (pg 6)  
 Winchcombe Scholarship Fund (pg 8, 19)  
 York Graduate Scholarship (pg 23)  
 YUFA (York University Faculty Association) Foundation Undergraduate Scholarship (pg 18)  
 Zoran Fotak Award (pg 9)



Gifts to the Schulich School of Business in the form of scholarships, awards and bursaries have a major impact on the achievements of our students. These achievements in turn contribute in a significant way to the School's continued success.

**Global Reach. Innovative Programs. Diverse Perspectives.**

## Information and inquiries

### **Division of Student Services and International Relations Schulich School of Business**

York University  
4700 Keele Street  
Toronto, Ontario  
Canada M3J 1P3  
[www.schulich.yorku.ca](http://www.schulich.yorku.ca)

Amanda Barnes  
Assistant Director, Financial Aid  
Tel.: (416) 736-2100 ext. 77979  
E-mail: [abarnes@schulich.yorku.ca](mailto:abarnes@schulich.yorku.ca)

Anne Caulfield  
Financial Aid Officer  
Tel.: (416) 736-2100 ext. 30515  
E-mail: [acaulfield@schulich.yorku.ca](mailto:acaulfield@schulich.yorku.ca)

### **Office of Student Financial Services York University**

(Central financial aid office for York University,  
contact for OSAP and student account inquiries)

Bennett Centre for Student Services  
Tel.: (416) 872-9675  
[sfs.yorku.ca](http://sfs.yorku.ca)

### **Faculty of Graduate Studies York University**

(Graduate student external scholarships and  
external awards database)

283 York Lanes  
Tel.: (416) 736-5328  
[www.yorku.ca/grads](http://www.yorku.ca/grads)

### **Office of Development and Alumni Relations**

Tel.: (416) 650-8050  
Fax: (416) 650-8071

Mark Rittinger  
Executive Director  
Development and Alumni Relations  
Tel.: (416) 650-8074  
E-mail: [mrittinger@schulich.yorku.ca](mailto:mrittinger@schulich.yorku.ca)

David Bell  
Associate Director, Development  
Tel.: (416) 650-8131  
E-mail: [dbell@schulich.yorku.ca](mailto:dbell@schulich.yorku.ca)

### **Schulich School of Business Seymour Schulich Building Graduate Admissions**

York University  
4700 Keele Street  
Toronto, Ontario  
Canada M3J 1P3  
[www.schulich.yorku.ca](http://www.schulich.yorku.ca)

#### **Domestic Admissions**

Tel.: (416) 736-5060  
Fax: (416) 650-8174  
E-mail: [admissions@schulich.yorku.ca](mailto:admissions@schulich.yorku.ca)

#### **International Admissions**

Tel.: (416) 736-5059  
Fax: (416) 650-8174  
E-mail: [intladmissions@schulich.yorku.ca](mailto:intladmissions@schulich.yorku.ca)

